

VAMP8 Rabbit mAb

Catalog # AP76954

Product Information

Application	WB, IHC-P, FC, IP, ICC
Primary Accession	Q9BV40
Reactivity	Human, Mouse, Rat
Host	Rabbit
Clonality	Monoclonal Antibody
Calculated MW	11438

Additional Information

Gene ID	8673
Other Names	VAMP8
Dilution	WB~~1/500-1/1000 IHC-P~~N/A FC~~1:10~50 IP~~N/A ICC~~N/A
Format	10mM PBS, pH 7.4, 150mM sodium chloride, 0.05% BSA, 0.02% sodium azide and 50% glycerol.

Protein Information

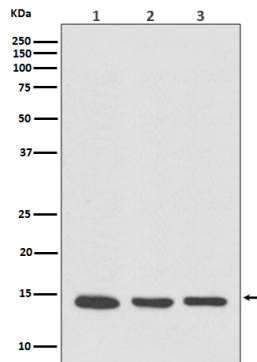
Name	VAMP8 {ECO:0000303 PubMed:12130530}
Function	<p>SNAREs, soluble N-ethylmaleimide-sensitive factor-attachment protein receptors, are essential proteins for fusion of cellular membranes. SNAREs localized on opposing membranes assemble to form a trans-SNARE complex, an extended, parallel four alpha-helical bundle that drives membrane fusion. VAMP8 is a SNARE involved in autophagy through the direct control of autophagosome membrane fusion with the lysosome membrane via its interaction with the STX17-SNAP29 binary t- SNARE complex (PubMed:23217709, PubMed:25686604). Also required for dense-granule secretion in platelets (PubMed:12130530). Also plays a role in regulated enzyme secretion in pancreatic acinar cells (By similarity). Involved in the abscission of the midbody during cell division, which leads to completely separate daughter cells (By similarity). Involved in the homotypic fusion of early and late endosomes (By similarity). Also participates in the activation of type I interferon antiviral response through a TRIM6-dependent mechanism (PubMed:31694946).</p>
Cellular Location	<p>Lysosome membrane; Single-pass type IV membrane protein. Early endosome membrane; Single-pass type IV membrane protein. Late endosome membrane; Single-pass type IV membrane protein. Cell membrane {ECO:0000250 UniProtKB:O70404}; Single-pass type IV membrane protein. Zymogen granule membrane {ECO:0000250 UniProtKB:O70404}; Single-pass</p>

type IV membrane protein. Note=Perinuclear vesicular structures of the early and late endosomes, coated pits, and trans-Golgi (By similarity) Sub-tight junctional domain in retinal pigment epithelium cells Midbody region during cytokinesis. Luminal oriented, apical membranes of nephric tubular cell (By similarity). Cycles through the apical but not through the basolateral plasma membrane (By similarity). Apical region of acinar cells; in zymogen granule membranes (By similarity) {ECO:0000250 | UniProtKB:Q9WUF4}

Tissue Location

Platelets..

Images



Please note: All products are 'FOR RESEARCH USE ONLY. NOT FOR USE IN DIAGNOSTIC OR THERAPEUTIC PROCEDURES'.