

# Iba1 Rabbit mAb

Catalog # AP76860

## Product Information

---

<b>Application</b>	WB, IHC-P
<b>Primary Accession</b>	<a href="#">O70200</a>
<b>Reactivity</b>	Human, Mouse, Rat
<b>Host</b>	Rabbit
<b>Clonality</b>	Monoclonal Antibody
<b>Calculated MW</b>	16911

## Additional Information

---

<b>Gene ID</b>	11629
<b>Other Names</b>	Aif1
<b>Dilution</b>	WB~~1/500-1/1000 IHC-P~~N/A
<b>Format</b>	Liquid

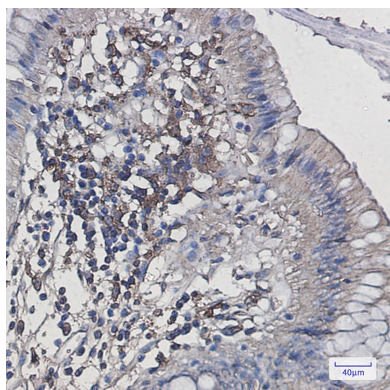
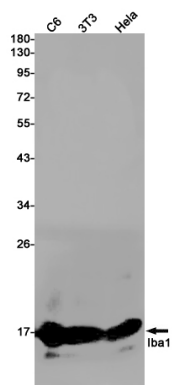
## Protein Information

---

<b>Name</b>	Aif1
<b>Synonyms</b>	Iba1
<b>Function</b>	Actin-binding protein that enhances membrane ruffling and RAC activation. Enhances the actin-bundling activity of LCP1. Binds calcium. Plays a role in RAC signaling and in phagocytosis. May play a role in macrophage activation and function. Promotes the proliferation of vascular smooth muscle cells and of T-lymphocytes. Enhances lymphocyte migration. Plays a role in vascular inflammation.
<b>Cellular Location</b>	Cytoplasm, cytoskeleton. Cell projection, ruffle membrane; Peripheral membrane protein; Cytoplasmic side. Cell projection, phagocytic cup Note=Associated with the actin cytoskeleton at membrane ruffles and at sites of phagocytosis.
<b>Tissue Location</b>	Abundantly expressed in the testis, moderately in the spleen and lymph nodes and at low levels in the liver and thymus Detected in macrophages.

## Images

---



Please note: All products are 'FOR RESEARCH USE ONLY. NOT FOR USE IN DIAGNOSTIC OR THERAPEUTIC PROCEDURES'.