

Ubiquitin Conjugating Enzyme E2 L3 Rabbit mAb

Catalog # AP76756

Product Information

Application	WB, IP, ICC
Primary Accession	P68036
Reactivity	Human, Mouse, Rat
Host	Rabbit
Clonality	Monoclonal Antibody
Calculated MW	17862

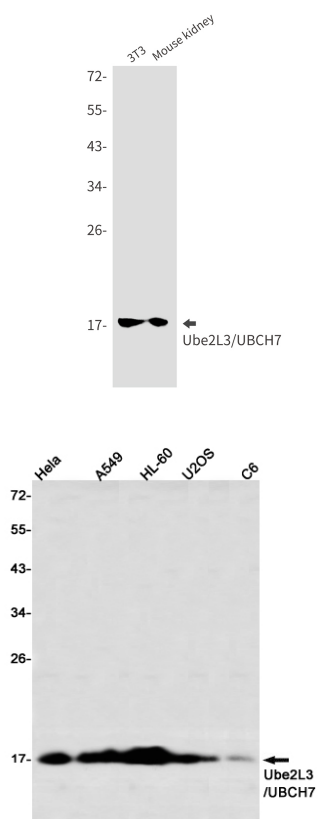
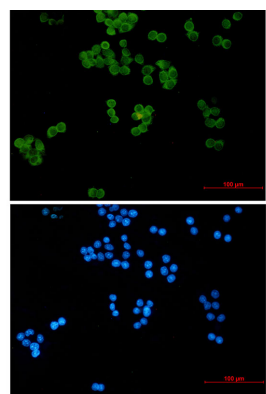
Additional Information

Gene ID	7332
Other Names	UBE2L3
Dilution	WB~~1/500-1/1000 IP~~1/20 ICC~~N/A
Format	50mM Tris-Glycine(pH 7.4), 0.15M NaCl, 40%Glycerol, 0.01% sodium azide and 0.05% BSA.
Storage	Store at 4°C short term. Aliquot and store at -20°C long term. Avoid freeze/thaw cycles.

Protein Information

Name	UBE2L3
Synonyms	UBCE7, UBCH7
Function	Ubiquitin-conjugating enzyme E2 that specifically acts with HECT-type and RBR family E3 ubiquitin-protein ligases. Does not function with most RING-containing E3 ubiquitin-protein ligases because it lacks intrinsic E3-independent reactivity with lysine; in contrast, it has activity with the RBR family E3 enzymes, such as PRKN, RNF31 and ARIH1, that function like RING-HECT hybrids. Accepts ubiquitin from the E1 complex and catalyzes its covalent attachment to other proteins. Mediates ubiquitination by the CUL9-RBX1 complex (PubMed: 38605244). In vitro catalyzes 'Lys-11'-linked polyubiquitination. Involved in the selective degradation of short-lived and abnormal proteins. Down- regulated during the S-phase it is involved in progression through the cell cycle. Regulates nuclear hormone receptors transcriptional activity. May play a role in myelopoiesis.
Cellular Location	Nucleus. Cytoplasm
Tissue Location	Ubiquitous, with highest expression in testis.

Images



Please note: All products are 'FOR RESEARCH USE ONLY. NOT FOR USE IN DIAGNOSTIC OR THERAPEUTIC PROCEDURES'.