

# RCC1 Rabbit mAb

Catalog # AP76692

## Product Information

---

Application	WB, IP, ICC
Primary Accession	<a href="#">P18754</a>
Reactivity	Human
Host	Rabbit
Clonality	Monoclonal Antibody
Calculated MW	44969

## Additional Information

---

Gene ID	1104
Other Names	RCC1
Dilution	WB~~1/500-1/1000 IP~~N/A ICC~~N/A
Format	50mM Tris-Glycine(pH 7.4), 0.15M NaCl, 40%Glycerol, 0.01% sodium azide and 0.05% BSA.

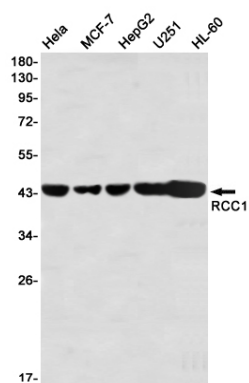
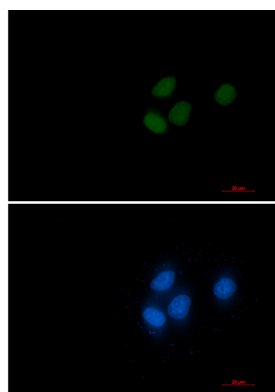
## Protein Information

---

Name	RCC1
Synonyms	CHC1
Function	<p>Guanine-nucleotide releasing factor that promotes the exchange of Ran-bound GDP by GTP, and thereby plays an important role in RAN-mediated functions in nuclear import and mitosis (PubMed:<a href="#">11336674</a>, PubMed:<a href="#">17435751</a>, PubMed:<a href="#">1944575</a>, PubMed:<a href="#">20668449</a>, PubMed:<a href="#">22215983</a>, PubMed:<a href="#">29042532</a>). Contributes to the generation of high levels of chromosome-associated, GTP-bound RAN, which is important for mitotic spindle assembly and normal progress through mitosis (PubMed:<a href="#">12194828</a>, PubMed:<a href="#">17435751</a>, PubMed:<a href="#">22215983</a>). Via its role in maintaining high levels of GTP-bound RAN in the nucleus, contributes to the release of cargo proteins from importins after nuclear import (PubMed:<a href="#">22215983</a>). Involved in the regulation of onset of chromosome condensation in the S phase (PubMed:<a href="#">3678831</a>). Binds both to the nucleosomes and double-stranded DNA (PubMed:<a href="#">17435751</a>, PubMed:<a href="#">18762580</a>).</p>
Cellular Location	<p>Nucleus. Chromosome. Cytoplasm Note=Predominantly nuclear in interphase cells (PubMed:12194828). Binds to mitotic chromosomes (PubMed:12194828, PubMed:17435751, PubMed:20668449).</p>

## Images

---



Please note: All products are 'FOR RESEARCH USE ONLY. NOT FOR USE IN DIAGNOSTIC OR THERAPEUTIC PROCEDURES'.