

PSD93 Rabbit mAb

Catalog # AP76674

Product Information

Application	WB, IP
Primary Accession	Q15700
Reactivity	Human, Rat
Host	Rabbit
Clonality	Monoclonal Antibody
Calculated MW	97552

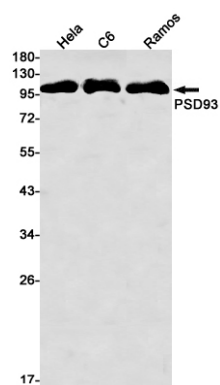
Additional Information

Gene ID	1740
Other Names	DLG2
Dilution	WB~~1/500-1/1000 IP~~N/A
Format	50mM Tris-Glycine(pH 7.4), 0.15M NaCl, 40%Glycerol, 0.01% sodium azide and 0.05% BSA.
Storage	Store at 4°C short term. Aliquot and store at -20°C long term. Avoid freeze/thaw cycles.

Protein Information

Name	DLG2
Function	Required for perception of chronic pain through NMDA receptor signaling. Regulates surface expression of NMDA receptors in dorsal horn neurons of the spinal cord. Interacts with the cytoplasmic tail of NMDA receptor subunits as well as inward rectifying potassium channels. Involved in regulation of synaptic stability at cholinergic synapses. Part of the postsynaptic protein scaffold of excitatory synapses (By similarity).
Cellular Location	Cell membrane {ECO:0000250 UniProtKB:Q63622}; Lipid-anchor {ECO:0000250 UniProtKB:Q63622}. Postsynaptic density {ECO:0000250 UniProtKB:Q63622}. Synapse. Membrane {ECO:0000250 UniProtKB:Q63622}. Cell projection, axon {ECO:0000250 UniProtKB:Q63622}. Perikaryon {ECO:0000250 UniProtKB:Q63622}. Note=Concentrated in soma and postsynaptic density of a subset of neurons {ECO:0000250 UniProtKB:Q63622}

Images



Please note: All products are 'FOR RESEARCH USE ONLY. NOT FOR USE IN DIAGNOSTIC OR THERAPEUTIC PROCEDURES'.