

Prohibitin Rabbit mAb

Catalog # AP76671

Product Information

Application	WB, IHC-P, IHC-F, IP, ICC
Primary Accession	P35232
Reactivity	Human, Rat
Host	Rabbit
Clonality	Monoclonal Antibody
Calculated MW	29804

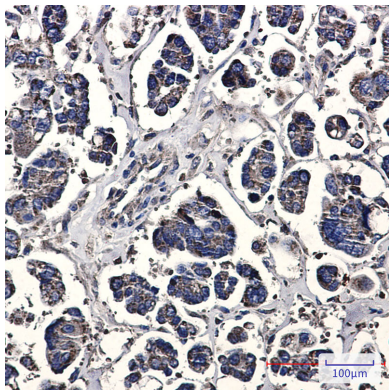
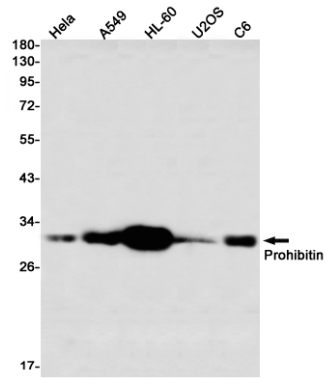
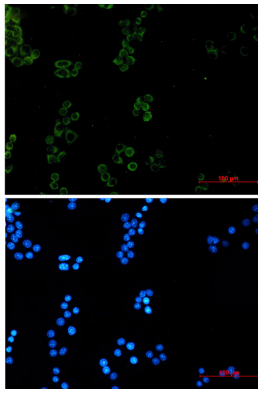
Additional Information

Gene ID	5245
Other Names	PHB1
Dilution	WB~~1/500-1/1000 IHC-P~~N/A IHC-F~~N/A IP~~N/A ICC~~N/A
Format	50mM Tris-Glycine(pH 7.4), 0.15M NaCl, 40%Glycerol, 0.01% sodium azide and 0.05% BSA.
Storage	Store at 4°C short term. Aliquot and store at -20°C long term. Avoid freeze/thaw cycles.

Protein Information

Name	PHB1 {ECO:0000303 PubMed:28017329, ECO:0000312 HGNC:HGNC:8912}
Function	Protein with pleiotropic attributes mediated in a cell- compartment- and tissue-specific manner, which include the plasma membrane-associated cell signaling functions, mitochondrial chaperone, and transcriptional co-regulator of transcription factors in the nucleus (PubMed: 11302691 , PubMed: 20959514 , PubMed: 28017329 , PubMed: 31522117). Plays a role in adipose tissue and glucose homeostasis in a sex-specific manner (By similarity). Contributes to pulmonary vascular remodeling by accelerating proliferation of pulmonary arterial smooth muscle cells (By similarity).
Cellular Location	Mitochondrion inner membrane. Nucleus. Cytoplasm. Cell membrane
Tissue Location	Widely expressed in different tissues.

Images



Please note: All products are 'FOR RESEARCH USE ONLY. NOT FOR USE IN DIAGNOSTIC OR THERAPEUTIC PROCEDURES'.