

PEN2 Rabbit mAb

Catalog # AP76649

Product Information

Application	WB, IHC-P, IHC-F, ICC
Primary Accession	Q9NZ42
Reactivity	Human, Mouse, Rat
Host	Rabbit
Clonality	Monoclonal Antibody
Calculated MW	12029

Additional Information

Gene ID	55851
Other Names	PSENEN
Dilution	WB~~1/500-1/1000 IHC-P~~N/A IHC-F~~N/A ICC~~N/A
Format	50mM Tris-Glycine(pH 7.4), 0.15M NaCl, 40%Glycerol, 0.01% sodium azide and 0.05% BSA.
Storage	Store at 4°C short term. Aliquot and store at -20°C long term. Avoid freeze/thaw cycles.

Protein Information

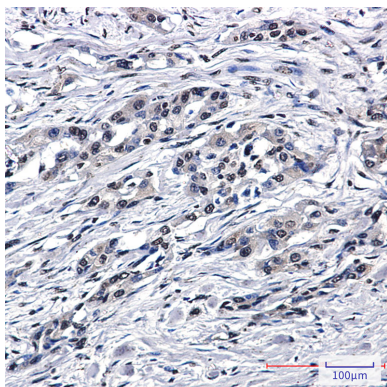
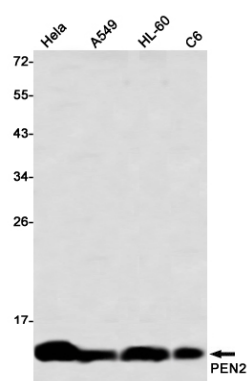
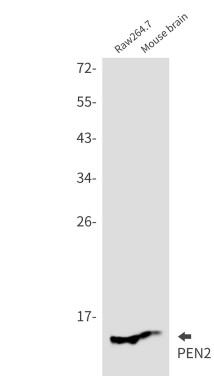
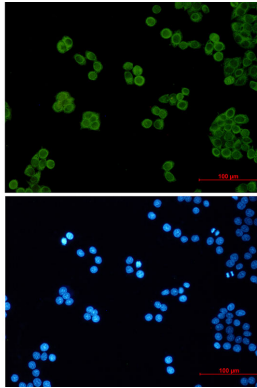
Name	PSENEN
Synonyms	PEN2
Function	Essential subunit of the gamma-secretase complex, an endoprotease complex that catalyzes the intramembrane cleavage of integral membrane proteins such as Notch receptors and APP (amyloid- beta precursor protein) (PubMed: 12522139 , PubMed: 12679784 , PubMed: 12740439 , PubMed: 12763021 , PubMed: 24941111 , PubMed: 30598546 , PubMed: 30630874). The gamma-secretase complex plays a role in Notch and Wnt signaling cascades and regulation of downstream processes via its role in processing key regulatory proteins, and by regulating cytosolic CTNNB1 levels (Probable). PSENEN modulates both endoproteolysis of presenilin and gamma-secretase activity (PubMed: 12522139 , PubMed: 12679784 , PubMed: 12740439 , PubMed: 12763021 , PubMed: 24941111).
Cellular Location	Endoplasmic reticulum membrane; Multi-pass membrane protein. Golgi apparatus, Golgi stack membrane; Multi-pass membrane protein. Cell membrane; Multi-pass membrane protein. Membrane; Multi-pass membrane protein Note=Predominantly located in the endoplasmic reticulum and in the

cis- Golgi.

Tissue Location

Widely expressed. Expressed in leukocytes, lung, placenta, small intestine, liver, kidney, spleen thymus, skeletal muscle, heart and brain.

Images



Please note: All products are 'FOR RESEARCH USE ONLY. NOT FOR USE IN DIAGNOSTIC OR THERAPEUTIC PROCEDURES'.