

NUP155 Rabbit mAb

Catalog # AP76628

Product Information

Application	WB, ICC
Primary Accession	O75694
Reactivity	Human
Host	Rabbit
Clonality	Monoclonal Antibody
Calculated MW	155199

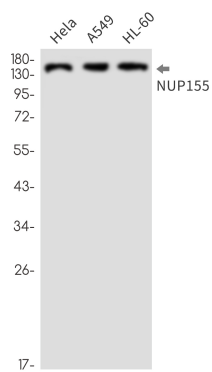
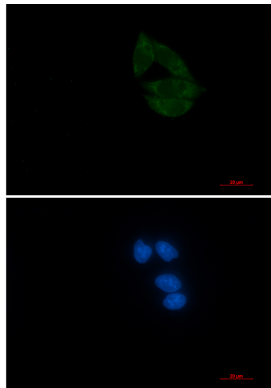
Additional Information

Gene ID	9631
Other Names	NUP155
Dilution	WB~~1/500-1/1000 ICC~~N/A
Format	50mM Tris-Glycine(pH 7.4), 0.15M NaCl, 40%Glycerol, 0.01% sodium azide and 0.05% BSA.
Storage	Store at 4°C short term. Aliquot and store at -20°C long term. Avoid freeze/thaw cycles.

Protein Information

Name	NUP155
Synonyms	KIAA0791
Function	Essential component of nuclear pore complex. Could be essential for embryogenesis. Nucleoporins may be involved both in binding and translocating proteins during nucleocytoplasmic transport.
Cellular Location	Nucleus, nuclear pore complex {ECO:0000250 UniProtKB:P37199}. Nucleus membrane {ECO:0000250 UniProtKB:P37199}; Peripheral membrane protein {ECO:0000250 UniProtKB:P37199}; Cytoplasmic side {ECO:0000250 UniProtKB:P37199}. Nucleus membrane {ECO:0000250 UniProtKB:P37199}; Peripheral membrane protein {ECO:0000250 UniProtKB:P37199}; Nucleoplasmic side {ECO:0000250 UniProtKB:P37199}. Note=In mitosis, assumes a diffuse cytoplasmic distribution probably as a monomer, before reversing back into a punctate nuclear surface localization at the end of mitosis {ECO:0000250 UniProtKB:P37199}
Tissue Location	Expressed in all tissues tested, including heart, brain, placenta, lung, liver,

Images



Please note: All products are 'FOR RESEARCH USE ONLY. NOT FOR USE IN DIAGNOSTIC OR THERAPEUTIC PROCEDURES'.