

NDUFS2 Rabbit mAb

Catalog # AP76609

Product Information

Application	WB, IHC-P, IP
Primary Accession	O75306
Reactivity	Human
Host	Rabbit
Clonality	Monoclonal Antibody
Calculated MW	52546

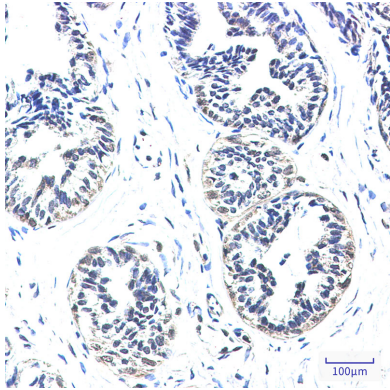
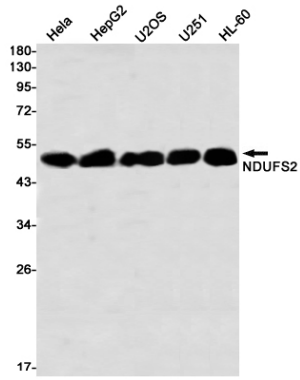
Additional Information

Gene ID	4720
Other Names	NDUFS2
Dilution	WB~~1/500-1/1000 IHC-P~~N/A IP~~N/A
Format	50mM Tris-Glycine(pH 7.4), 0.15M NaCl, 40%Glycerol, 0.01% sodium azide and 0.05% BSA.
Storage	Store at 4°C short term. Aliquot and store at -20°C long term. Avoid freeze/thaw cycles.

Protein Information

Name	NDUFS2
Function	Core subunit of the mitochondrial membrane respiratory chain NADH dehydrogenase (Complex I) which catalyzes electron transfer from NADH through the respiratory chain, using ubiquinone as an electron acceptor (PubMed: 22036843 , PubMed: 28031252 , PubMed: 30922174). Essential for the catalytic activity of complex I (PubMed: 22036843 , PubMed: 30922174). Essential for the assembly of complex I (By similarity). Redox-sensitive, critical component of the oxygen-sensing pathway in the pulmonary vasculature which plays a key role in acute pulmonary oxygen-sensing and hypoxic pulmonary vasoconstriction (PubMed: 30922174). Plays an important role in carotid body sensing of hypoxia (By similarity). Essential for glia-like neural stem and progenitor cell proliferation, differentiation and subsequent oligodendrocyte or neuronal maturation (By similarity).
Cellular Location	Mitochondrion inner membrane; Peripheral membrane protein {ECO:0000250 UniProtKB:Q641Y2}; Matrix side {ECO:0000250 UniProtKB:Q641Y2}

Images



Please note: All products are 'FOR RESEARCH USE ONLY. NOT FOR USE IN DIAGNOSTIC OR THERAPEUTIC PROCEDURES'.