

# Meckelin Rabbit mAb

Catalog # AP76585

## Product Information

---

Application	WB, ICC
Primary Accession	<a href="#">Q5HYA8</a>
Reactivity	Human
Host	Rabbit
Clonality	Monoclonal Antibody
Calculated MW	111745

## Additional Information

---

Gene ID	91147
Other Names	TMEM67
Dilution	WB~~1/500-1/1000 ICC~~N/A
Format	50mM Tris-Glycine(pH 7.4), 0.15M NaCl, 40%Glycerol, 0.01% sodium azide and 0.05% BSA.
Storage	Store at 4°C short term. Aliquot and store at -20°C long term. Avoid freeze/thaw cycles.

## Protein Information

---

Name	TMEM67
Synonyms	MKS3
Function	Required for ciliary structure and function. Part of the tectonic-like complex which is required for tissue-specific ciliogenesis and may regulate ciliary membrane composition (By similarity). Involved in centrosome migration to the apical cell surface during early ciliogenesis. Involved in the regulation of cilia length and appropriate number through the control of centrosome duplication. Is a key regulator of stereociliary bundle orientation (By similarity). Required for epithelial cell branching morphology. Essential for endoplasmic reticulum-associated degradation (ERAD) of surfactant protein C (SFTPC). Involved in the negative regulation of canonical Wnt signaling, and activation of the non-canonical cascade stimulated by WNT5A (PubMed: <a href="#">26035863</a> ). In non-canonical Wnt signaling, it may act as ROR2 coreceptor (By similarity).
Cellular Location	Cell membrane; Multi-pass membrane protein. Endoplasmic reticulum membrane; Multi-pass membrane protein. Cell projection, cilium Cytoplasm, cytoskeleton, cilium basal body. Note=Localizes at the transition zone, a

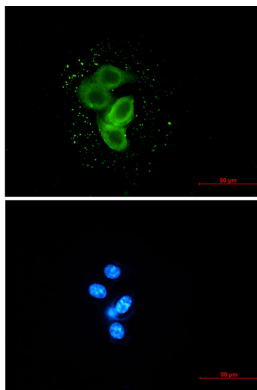
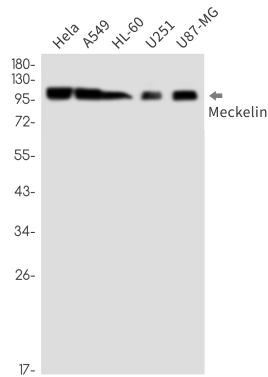
region between the basal body and the ciliary axoneme (PubMed:22121117).

## Tissue Location

Widely expressed in adult and fetal tissues. Expressed at higher level in spinal cord.

## Images

---



Please note: All products are 'FOR RESEARCH USE ONLY. NOT FOR USE IN DIAGNOSTIC OR THERAPEUTIC PROCEDURES'.