

IKB epsilon Rabbit mAb

Catalog # AP76547

Product Information

Application	WB, IP
Primary Accession	O00221
Reactivity	Human
Host	Rabbit
Clonality	Monoclonal Antibody
Calculated MW	52864

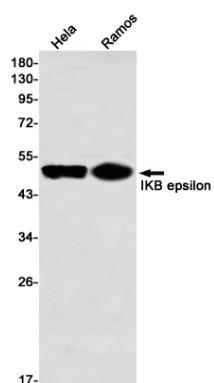
Additional Information

Gene ID	4794
Other Names	NFKBIE
Dilution	WB~~1/500-1/1000 IP~~N/A
Format	50mM Tris-Glycine(pH 7.4), 0.15M NaCl, 40%Glycerol, 0.01% sodium azide and 0.05% BSA.

Protein Information

Name	NFKBIE
Synonyms	IKBE
Function	Sequesters NF-kappa-B transcription factor complexes in the cytoplasm, thereby inhibiting their activity (PubMed: 9315679). Sequestered complexes include NFKB1-RELA (p50-p65) and NFKB1-REL (p50- c-Rel) complexes (PubMed: 9135156 , PubMed: 9315679). Limits B-cell activation in response to pathogens, and also plays an important role in B-cell development (By similarity).
Cellular Location	Cytoplasm.
Tissue Location	Highly expressed in spleen, testis and lung, followed by kidney, pancreas, heart, placenta and brain. Also expressed in granulocytes and macrophages

Images



Please note: All products are 'FOR RESEARCH USE ONLY. NOT FOR USE IN DIAGNOSTIC OR THERAPEUTIC PROCEDURES'.