

Cystatin B Rabbit mAb

Catalog # AP76461

Product Information

Application	WB, IHC-P
Primary Accession	P04080
Reactivity	Human, Rat
Host	Rabbit
Clonality	Monoclonal Antibody
Calculated MW	11140

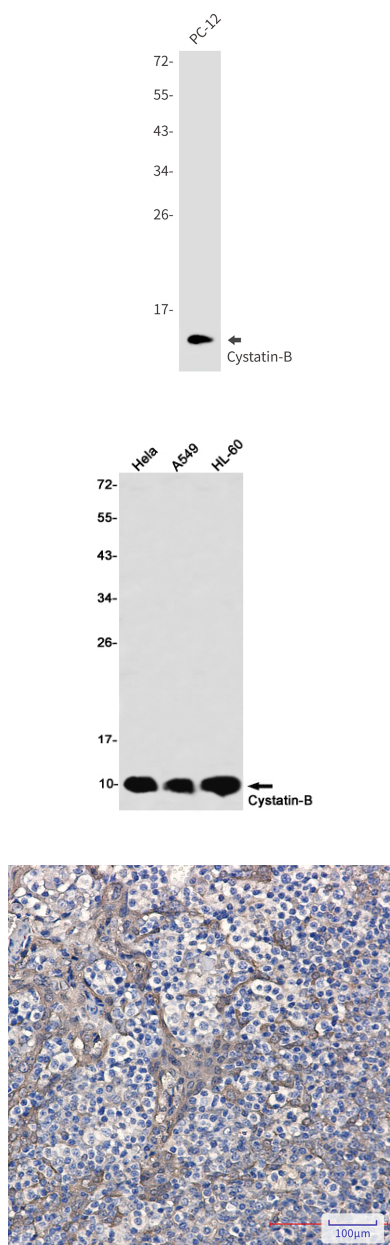
Additional Information

Gene ID	1476
Other Names	CSTB
Dilution	WB~~1/500-1/1000 IHC-P~~N/A
Format	50mM Tris-Glycine(pH 7.4), 0.15M NaCl, 40%Glycerol, 0.01% sodium azide and 0.05% BSA.
Storage	Store at 4°C short term. Aliquot and store at -20°C long term. Avoid freeze/thaw cycles.

Protein Information

Name	CSTB
Synonyms	CST6, STFB
Function	This is an intracellular thiol proteinase inhibitor. Tightly binding reversible inhibitor of cathepsins L, H and B.
Cellular Location	Cytoplasm. Nucleus

Images



Please note: All products are 'FOR RESEARCH USE ONLY. NOT FOR USE IN DIAGNOSTIC OR THERAPEUTIC PROCEDURES'.