

CPS1 Rabbit mAb

Catalog # AP76447

Product Information

Application	WB, IHC-P
Primary Accession	P31327
Reactivity	Rat, Human, Mouse
Host	Rabbit
Clonality	Monoclonal Antibody
Isotype	IgG
Conjugate	Unconjugated
Purification	Affinity Purified
Calculated MW	164939

Additional Information

Gene ID	1373
Other Names	CPS1
Dilution	WB~~1:1000-1:5000 IHC-P~~N/A
Format	Liquid in 50mM Tris-Glycine(pH 7.4), 0.15M NaCl, 40%Glycerol, 0.01% sodium azide and 0.05% BSA.
Storage	Store at 4°C short term. Aliquot and store at -20°C long term. Avoid freeze/thaw cycles.

Protein Information

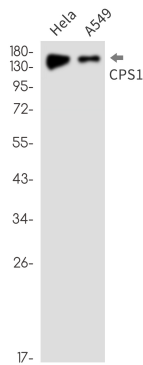
Name	CPS1
Function	Involved in the urea cycle of ureotelic animals where the enzyme plays an important role in removing excess ammonia from the cell.
Cellular Location	Mitochondrion. Nucleus, nucleolus. Cell membrane {ECO:0000250 UniProtKB:Q8C196}; Peripheral membrane protein; Extracellular side {ECO:0000250 UniProtKB:Q8C196} Note=Localizes to the cell surface of hepatocytes {ECO:0000250 UniProtKB:Q8C196}
Tissue Location	Primarily in the liver and small intestine.

Background

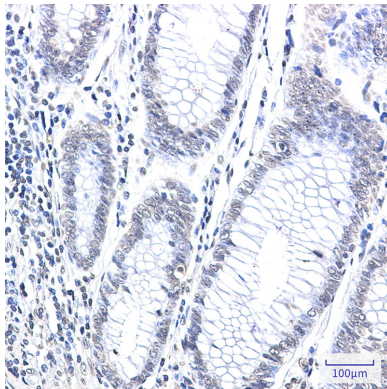
The mitochondrial enzyme encoded by this gene catalyzes synthesis of carbamoyl phosphate from ammonia

and bicarbonate. This reaction is the first committed step of the urea cycle, which is important in the removal of excess urea from cells. The encoded protein may also represent a core mitochondrial nucleoid protein. Three transcript variants encoding different isoforms have been found for this gene. The shortest isoform may not be localized to the mitochondrion. Mutations in this gene have been associated with carbamoyl phosphate synthetase deficiency, susceptibility to persistent pulmonary hypertension, and susceptibility to venoocclusive disease after bone marrow transplantation.[provided by RefSeq, May 2010].

Images



Western blot analysis of CPS1 in HeLa, A549 lysates using CPS1 antibody.



Immunohistochemistry analysis of paraffin-embedded Human colon cancer using CPS1 antibody. High-pressure and temperature Sodium Citrate pH 6.0 was used for antigen retrieval.

Please note: All products are 'FOR RESEARCH USE ONLY. NOT FOR USE IN DIAGNOSTIC OR THERAPEUTIC PROCEDURES'.