

CDC37 Rabbit mAb

Catalog # AP76433

Product Information

| | |
|--------------------------|------------------------|
| Application | WB, IP |
| Primary Accession | Q16543 |
| Reactivity | Human, Mouse, Rat |
| Host | Rabbit |
| Clonality | Monoclonal Antibody |
| Calculated MW | 44468 |

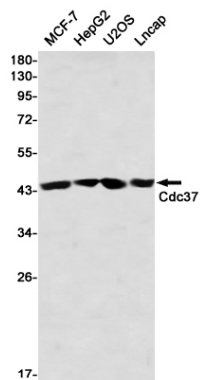
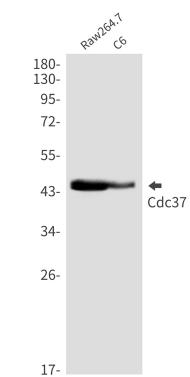
Additional Information

| | |
|--------------------|--|
| Gene ID | 11140 |
| Other Names | CDC37 |
| Dilution | WB~~1/500-1/1000 IP~~1/20 |
| Format | 50mM Tris-Glycine(pH 7.4), 0.15M NaCl, 40%Glycerol, 0.01% sodium azide and 0.05% BSA. |
| Storage | Store at 4°C short term. Aliquot and store at -20°C long term. Avoid freeze/thaw cycles. |

Protein Information

| | |
|--------------------------|--|
| Name | CDC37 |
| Synonyms | CDC37A |
| Function | Co-chaperone that binds to numerous kinases and promotes their interaction with the Hsp90 complex, resulting in stabilization and promotion of their activity (PubMed: 8666233). Inhibits HSP90AA1 ATPase activity (PubMed: 23569206). |
| Cellular Location | Cytoplasm. |

Images



Please note: All products are 'FOR RESEARCH USE ONLY. NOT FOR USE IN DIAGNOSTIC OR THERAPEUTIC PROCEDURES'.