

# CDC123 Rabbit mAb

Catalog # AP76431

## Product Information

---

<b>Application</b>	WB, IP
<b>Primary Accession</b>	<a href="#">O75794</a>
<b>Reactivity</b>	Human
<b>Host</b>	Rabbit
<b>Clonality</b>	Monoclonal Antibody
<b>Calculated MW</b>	39135

## Additional Information

---

<b>Gene ID</b>	8872
<b>Other Names</b>	CDC123
<b>Dilution</b>	WB~~1/500-1/1000 IP~~N/A
<b>Format</b>	50mM Tris-Glycine(pH 7.4), 0.15M NaCl, 40%Glycerol, 0.01% sodium azide and 0.05% BSA.
<b>Storage</b>	Store at 4°C short term. Aliquot and store at -20°C long term. Avoid freeze/thaw cycles.

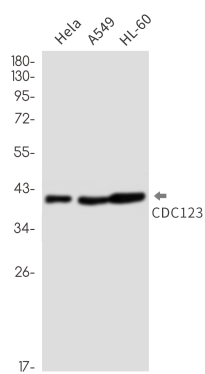
## Protein Information

---

<b>Name</b>	CDC123
<b>Synonyms</b>	C10orf7, D123
<b>Function</b>	ATP-dependent protein-folding chaperone for the eIF2 complex (PubMed: <a href="#">35031321</a> , PubMed: <a href="#">37507029</a> ). Binds to the gamma subunit of the eIF2 complex which allows the subunit to assemble with the alpha and beta subunits (By similarity).
<b>Cellular Location</b>	Cytoplasm {ECO:0000250 UniProtKB:Q62834}.
<b>Tissue Location</b>	Widely expressed. Expressed in spleen, thymus, prostate, testis, ovary, small intestine, colon and leukocytes with the highest expression in testis.

## Images

---



Please note: All products are 'FOR RESEARCH USE ONLY. NOT FOR USE IN DIAGNOSTIC OR THERAPEUTIC PROCEDURES'.