

Casein Kinase 2 beta Rabbit mAb

Catalog # AP76420

Product Information

Application	WB, IHC-P, FC
Primary Accession	P67870
Reactivity	Rat, Human, Mouse
Host	Rabbit
Clonality	Monoclonal Antibody
Isotype	IgG
Conjugate	Unconjugated
Purification	Affinity Purified
Calculated MW	25 KDa

Additional Information

Other Names	CSNK2B
Dilution	WB~~1:500-1:1000 IHC-P~~N/A FC~~1:20-1:50
Format	Liquid in 50mM Tris-Glycine(pH 7.4), 0.15M NaCl, 40%Glycerol, 0.01% sodium azide and 0.05% BSA.
Storage	Store at 4°C short term. Aliquot and store at -20°C long term. Avoid freeze/thaw cycles.

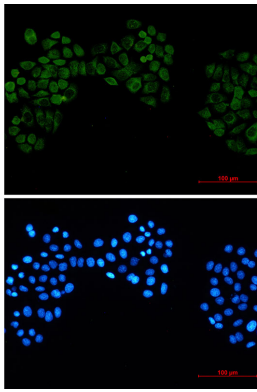
Protein Information

Background

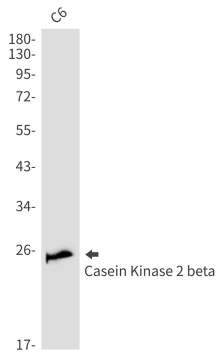
CK2 (formerly called Casein Kinase II) is a highly conserved protein kinase with more than 300 substrates regulating cell growth, cell death, and cell survival. CK2 has been implicated in the response to UV irradiation-induced DNA damage, targeting XRCC1 and BRCA1 as well as regulating p53 tumor suppressor protein functions. Furthermore, CK2 plays a key role in NF-κB activation.

Images

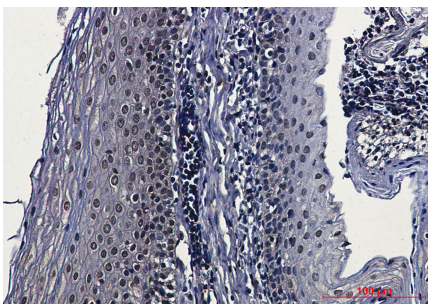
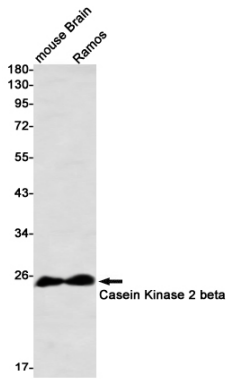
Immunocytochemistry analysis of Casein Kinase 2 beta (green) in Hela using Casein Kinase 2 beta antibody, and DAPI(blue).



Western blot analysis of Casein Kinase 2 beta in C6 lysates using Casein Kinase 2 beta antibody.



Western blot analysis of Casein Kinase 2 beta in mouse Brain, Ramos lysates using Casein Kinase 2 beta antibody



Immunohistochemistry analysis of paraffin-embedded Human tonsil using Casein Kinase 2 beta antibody. High-pressure and temperature Sodium Citrate pH 6.0 was used for antigen retrieval.

Please note: All products are 'FOR RESEARCH USE ONLY. NOT FOR USE IN DIAGNOSTIC OR THERAPEUTIC PROCEDURES'.