

alpha Internexin Rabbit mAb

Catalog # AP76386

Product Information

Application	WB, IHC-P, FC, IP
Primary Accession	Q16352
Reactivity	Rat, Human, Mouse
Host	Rabbit
Clonality	Monoclonal Antibody
Isotype	IgG
Conjugate	Unconjugated
Purification	Affinity Purified
Calculated MW	55391

Additional Information

Gene ID	9118
Other Names	INA
Dilution	WB~~1:500-1:2000 IHC-P~~N/A FC~~1:10~50 IP~~1:20
Format	Liquid in 50mM Tris-Glycine(pH 7.4), 0.15M NaCl, 40%Glycerol, 0.01% sodium azide and 0.05% BSA.
Storage	Store at 4°C short term. Aliquot and store at -20°C long term. Avoid freeze/thaw cycles.

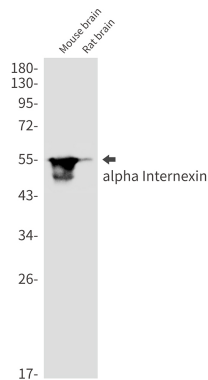
Protein Information

Name	INA
Synonyms	NEF5
Function	Class-IV neuronal intermediate filament that is able to self- assemble. It is involved in the morphogenesis of neurons. It may form an independent structural network without the involvement of other neurofilaments or it may cooperate with NEFL to form the filamentous backbone to which NEFM and NEFH attach to form the cross-bridges. May also cooperate with the neuronal intermediate filament protein PRPH to form filamentous networks (By similarity).
Tissue Location	Found predominantly in adult CNS.

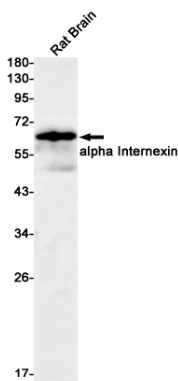
Background

Class-IV neuronal intermediate filament that is able to self-assemble. It is involved in the morphogenesis of neurons. It may form an independent structural network without the involvement of other neurofilaments or it may cooperate with NF-L to form the filamentous backbone to which NF-M and NF-H attach to form the cross-bridges.

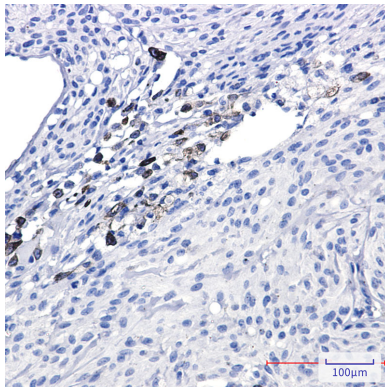
Images



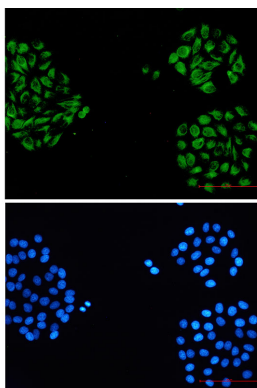
Western blot analysis of alpha Internexin in mouse brain, rat brain lysates using alpha Internexin antibody.



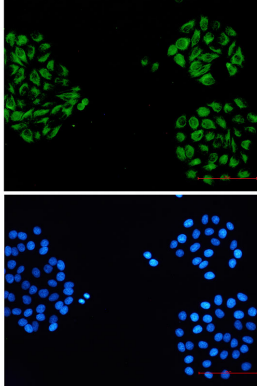
Western blot analysis of alpha Internexin in rat Brain lysates using alpha Internexin antibody.



Immunohistochemistry analysis of paraffin-embedded Human Brain using alpha Internexin antibody. High-pressure and temperature Sodium Citrate pH 6.0 was used for antigen retrieval.



Immunocytochemistry analysis of alpha Internexin (green) in HeLa using alpha Internexin antibody, and DAPI (blue).



Please note: All products are 'FOR RESEARCH USE ONLY. NOT FOR USE IN DIAGNOSTIC OR THERAPEUTIC PROCEDURES'.