

# Phospho-CDC37 (Ser13) Rabbit mAb

Catalog # AP76327

## Product Information

---

<b>Application</b>	WB, IP
<b>Primary Accession</b>	<a href="#">Q16543</a>
<b>Reactivity</b>	Human, Mouse, Rat
<b>Host</b>	Rabbit
<b>Clonality</b>	Monoclonal Antibody
<b>Calculated MW</b>	44468

## Additional Information

---

<b>Gene ID</b>	11140
<b>Other Names</b>	CDC37
<b>Dilution</b>	WB~~1/500-1/1000 IP~~1/20
<b>Format</b>	50mM Tris-Glycine(pH 7.4), 0.15M NaCl, 40%Glycerol, 0.01% sodium azide and 0.05% BSA.
<b>Storage</b>	Store at 4°C short term. Aliquot and store at -20°C long term. Avoid freeze/thaw cycles.

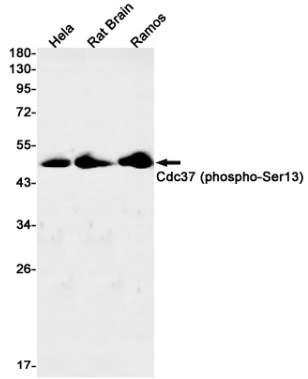
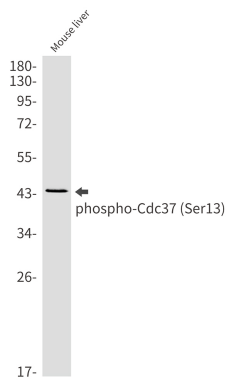
## Protein Information

---

<b>Name</b>	CDC37
<b>Synonyms</b>	CDC37A
<b>Function</b>	Co-chaperone that binds to numerous kinases and promotes their interaction with the Hsp90 complex, resulting in stabilization and promotion of their activity (PubMed: <a href="#">8666233</a> ). Inhibits HSP90AA1 ATPase activity (PubMed: <a href="#">23569206</a> ).
<b>Cellular Location</b>	Cytoplasm.

## Images

---



Please note: All products are 'FOR RESEARCH USE ONLY. NOT FOR USE IN DIAGNOSTIC OR THERAPEUTIC PROCEDURES'.