

Glucocorticoid Receptor Rabbit mAb

Catalog # AP76320

Product Information

Application	WB, FC
Primary Accession	P04150
Reactivity	Rat, Human, Mouse
Host	Rabbit
Clonality	Monoclonal Antibody
Isotype	IgG
Conjugate	Unconjugated
Purification	Affinity Purified
Calculated MW	85659

Additional Information

Gene ID	2908
Other Names	NR3C1
Dilution	WB~~1:1000-1:5000 FC~~1:100-1:1000
Format	Liquid in 50mM Tris-Glycine(pH 7.4), 0.15M NaCl, 40%Glycerol, 0.01% sodium azide and 0.05% BSA.
Storage	Store at 4°C short term. Aliquot and store at -20°C long term. Avoid freeze/thaw cycles.

Protein Information

Name	NR3C1 (HGNC:7978)
Synonyms	GRL
Function	Receptor for glucocorticoids (GC) (PubMed: 27120390 , PubMed: 37478846). Has a dual mode of action: as a transcription factor that binds to glucocorticoid response elements (GRE), both for nuclear and mitochondrial DNA, and as a modulator of other transcription factors (PubMed: 28139699). Affects inflammatory responses, cellular proliferation and differentiation in target tissues. Involved in chromatin remodeling (PubMed: 9590696). Plays a role in rapid mRNA degradation by binding to the 5' UTR of target mRNAs and interacting with PNRC2 in a ligand-dependent manner which recruits the RNA helicase UPF1 and the mRNA-decapping enzyme DCP1A, leading to RNA decay (PubMed: 25775514). Could act as a coactivator for STAT5-dependent transcription upon growth hormone (GH) stimulation and could reveal an essential role of hepatic GR in the control of body growth (By similarity).

Cellular Location

[Isoform Alpha]: Cytoplasm. Nucleus. Mitochondrion. Cytoplasm, cytoskeleton, spindle. Cytoplasm, cytoskeleton, microtubule organizing center, centrosome. Chromosome {ECO:0000250|UniProtKB:P06537}. Nucleus, nucleoplasm {ECO:0000250|UniProtKB:P06537}. Note=After ligand activation, translocates from the cytoplasm to the nucleus (PubMed:30698747). The hormone-occupied receptor undergoes rapid exchange between chromatin and the nucleoplasmic compartment (By similarity). In the presence of NR1D1 shows a time-dependent subcellular localization, localizing to the cytoplasm at ZT8 and to the nucleus at ZT20 (By similarity). Lacks this diurnal pattern of localization in the absence of NR1D1, localizing to both nucleus and the cytoplasm at ZT8 and ZT20 (By similarity). Upon dexamethasone binding associates with the glucocorticoid response elements of target genes (By similarity) {ECO:0000250|UniProtKB:P06537, ECO:0000269|PubMed:30698747} [Isoform Alpha-B]: Nucleus. Cytoplasm Note=After ligand activation, translocates from the cytoplasm to the nucleus.

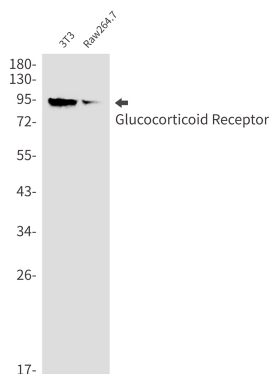
Tissue Location

Widely expressed including bone, stomach, lung, liver, colon, breast, ovary, pancreas and kidney (PubMed:25847991). In the heart, detected in left and right atria, left and right ventricles, aorta, apex, intraventricular septum, and atrioventricular node as well as whole adult and fetal heart (PubMed:10902803) [Isoform Alpha-2]: Widely expressed.

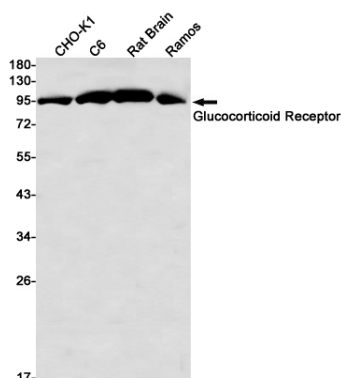
Background

The protein encoded by this gene is a receptor for glucocorticoids and can act as both a transcription factor and a regulator of other transcription factors. The encoded protein can bind DNA as a homodimer or as a heterodimer with another protein such as the retinoid X receptor. This protein can also be found in heteromeric cytoplasmic complexes along with heat shock factors and immunophilins.

Images



Western blot analysis of Glucocorticoid Receptor in 3T3, Raw264.7 lysates using Glucocorticoid Receptor antibody.



Western blot analysis of Glucocorticoid Receptor in CHO-K1, C6, rat Brain, Ramos lysates using Glucocorticoid Receptor antibody.

Please note: All products are 'FOR RESEARCH USE ONLY. NOT FOR USE IN DIAGNOSTIC OR THERAPEUTIC PROCEDURES'.