

Osteopontin Rabbit mAb

Catalog # AP76291

Product Information

Application	WB, IHC-P, FC
Primary Accession	P10451
Reactivity	Rat, Human, Mouse
Host	Rabbit
Clonality	Monoclonal Antibody
Isotype	IgG
Conjugate	Unconjugated
Purification	Affinity Purified
Calculated MW	35423

Additional Information

Gene ID	6696
Other Names	SPP1
Dilution	WB~~1:500-1:4000 IHC-P~~N/A FC~~1:20-1:50
Format	1xPBS(pH 7.4), 150mM NaCl, 50% Glycerol, 0.02% Sodium azide and 0.05% BSA
Storage	Store at 4°C short term. Aliquot and store at -20°C long term. Avoid freeze/thaw cycles.

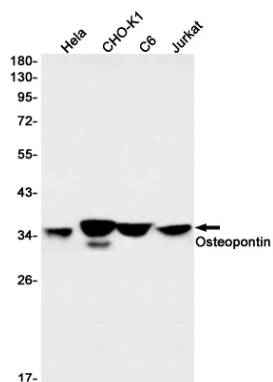
Protein Information

Name	SPP1
Synonyms	BNSP, OPN
Function	Major non-collagenous bone protein that binds tightly to hydroxyapatite. Appears to form an integral part of the mineralized matrix. Probably important to cell-matrix interaction.
Cellular Location	Secreted
Tissue Location	Detected in cerebrospinal fluid and urine (at protein level) (PubMed:25326458, PubMed:36213313, PubMed:37453717) Bone. Found in plasma.

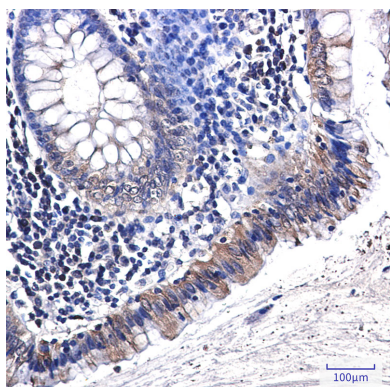
Background

Major non-collagenous bone protein that binds tightly to hydroxyapatite. Appears to form an integral part of the mineralized matrix. Probably important to cell-matrix interaction. Acts as a cytokine involved in enhancing production of interferon-gamma and interleukin-12 and reducing production of interleukin-10 and is essential in the pathway that leads to type I immunity.

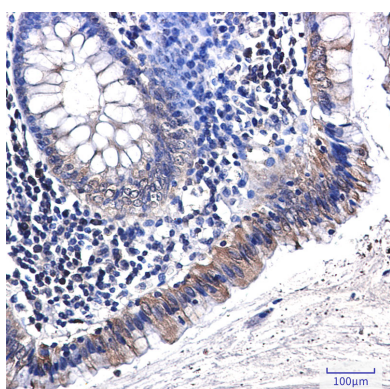
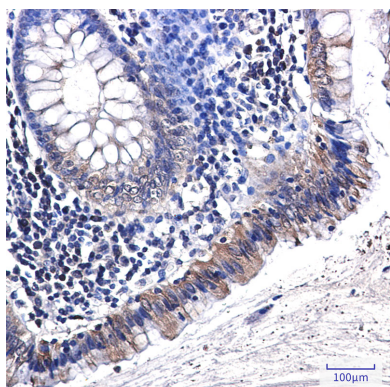
Images



Western blot analysis of Osteopontin in HeLa, CHO-K1, C6, Jurkat lysates using Osteopontin antibody.



Immunohistochemistry analysis of paraffin-embedded Human colon cancer using Osteopontin antibody. High-pressure and temperature Sodium Citrate pH 6.0 was used for antigen retrieval.



Please note: All products are 'FOR RESEARCH USE ONLY. NOT FOR USE IN DIAGNOSTIC OR THERAPEUTIC PROCEDURES'.