

WAVE1 Rabbit mAb

Catalog # AP76256

Product Information

Application	WB, FC
Primary Accession	Q92558
Reactivity	Rat, Human, Mouse
Host	Rabbit
Clonality	Monoclonal Antibody
Isotype	IgG
Conjugate	Unconjugated
Purification	Affinity Purified
Calculated MW	61652

Additional Information

Gene ID	8936
Other Names	WASF1
Dilution	WB~~1:1000-1:5000 FC~~1:100-1:200
Format	Liquid in 50mM Tris-Glycine(pH 7.4), 0.15M NaCl, 40%Glycerol, 0.01% sodium azide and 0.05% BSA.
Storage	Store at 4°C short term. Aliquot and store at -20°C long term. Avoid freeze/thaw cycles.

Protein Information

Name	WASF1 (HGNC:12732)
Synonyms	KIAA0269, SCAR1, WAVE1
Function	Downstream effector molecule involved in the transmission of signals from tyrosine kinase receptors and small GTPases to the actin cytoskeleton. Promotes formation of actin filaments. Part of the WAVE complex that regulates lamellipodia formation (PubMed: 29961568). The WAVE complex regulates actin filament reorganization via its interaction with the Arp2/3 complex (By similarity). As component of the WAVE1 complex, required for BDNF-NTRK2 endocytic trafficking and signaling from early endosomes (By similarity). Also involved in the regulation of mitochondrial dynamics (PubMed: 29961568).
Cellular Location	Cytoplasm, cytoskeleton. Synapse {ECO:0000250 UniProtKB:Q5BJU7} Cell junction, focal adhesion. Note=Dot- like pattern in the cytoplasm. Concentrated in Rac-regulated membrane- ruffling areas (PubMed:9889097).

Partial translocation to focal adhesion sites might be mediated by interaction with SORBS2 (PubMed:18559503). In neurons, colocalizes with activated NTRK2 after BDNF addition in endocytic sites through the association with TMEM108 (By similarity). {ECO:0000250 | UniProtKB:Q8R5H6, ECO:0000269 | PubMed:18559503, ECO:0000269 | PubMed:9889097}

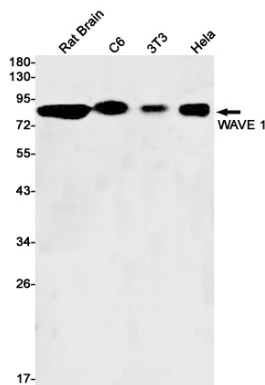
Tissue Location

Highly expressed in brain. Lowly expressed in testis, ovary, colon, kidney, pancreas, thymus, small intestine and peripheral blood

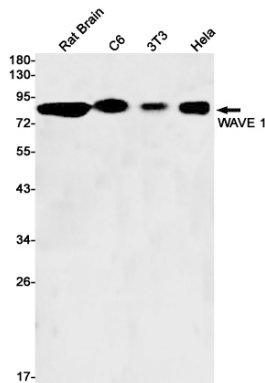
Background

Downstream effector molecule involved in the transmission of signals from tyrosine kinase receptors and small GTPases to the actin cytoskeleton. Promotes formation of actin filaments. Part of the WAVE complex that regulates lamellipodia formation. The WAVE complex regulates actin filament reorganization via its interaction with the Arp2/3 complex . As component of the WAVE1 complex, required for BDNF-NTRK2 endocytic trafficking and signaling from early endosomes .

Images



Western blot analysis of WAVE 1 in rat Brain, C6, 3T3, HeLa lysates using WAVE 1 antibody.



Please note: All products are 'FOR RESEARCH USE ONLY. NOT FOR USE IN DIAGNOSTIC OR THERAPEUTIC PROCEDURES'.