

WAVE 1 Rabbit mAb

Catalog # AP76256

Product Information

Application	WB
Primary Accession	Q92558
Reactivity	Human, Mouse, Rat
Host	Rabbit
Clonality	Monoclonal Antibody
Calculated MW	61652

Additional Information

Gene ID	8936
Other Names	WASF1
Dilution	WB~~1/500-1/1000
Format	50mM Tris-Glycine(pH 7.4), 0.15M NaCl, 40%Glycerol, 0.01% sodium azide and 0.05% BSA.

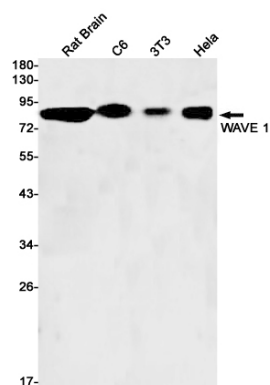
Protein Information

Name	WASF1 (HGNC:12732)
Synonyms	KIAA0269, SCAR1, WAVE1
Function	<p>Downstream effector molecule involved in the transmission of signals from tyrosine kinase receptors and small GTPases to the actin cytoskeleton. Promotes formation of actin filaments. Part of the WAVE complex that regulates lamellipodia formation (PubMed:29961568). The WAVE complex regulates actin filament reorganization via its interaction with the Arp2/3 complex (By similarity). As component of the WAVE1 complex, required for BDNF-NTRK2 endocytic trafficking and signaling from early endosomes (By similarity). Also involved in the regulation of mitochondrial dynamics (PubMed:29961568).</p>
Cellular Location	<p>Cytoplasm, cytoskeleton. Synapse {ECO:0000250 UniProtKB:Q5BJU7} Cell junction, focal adhesion. Note=Dot- like pattern in the cytoplasm. Concentrated in Rac-regulated membrane- ruffling areas (PubMed:9889097). Partial translocation to focal adhesion sites might be mediated by interaction with SORBS2 (PubMed:18559503). In neurons, colocalizes with activated NTRK2 after BDNF addition in endocytic sites through the association with TMEM108 (By similarity). {ECO:0000250 UniProtKB:Q8R5H6, ECO:0000269 PubMed:18559503, ECO:0000269 PubMed:9889097}</p>

Tissue Location

Highly expressed in brain. Lowly expressed in testis, ovary, colon, kidney, pancreas, thymus, small intestine and peripheral blood

Images



Please note: All products are 'FOR RESEARCH USE ONLY. NOT FOR USE IN DIAGNOSTIC OR THERAPEUTIC PROCEDURES'.