

ULK3 Rabbit mAb

Catalog # AP76231

Product Information

Application	WB, IHC-P, FC
Primary Accession	Q6PHR2
Reactivity	Human
Host	Rabbit
Clonality	Monoclonal Antibody
Isotype	IgG
Conjugate	Unconjugated
Purification	Affinity Purified
Calculated MW	53444

Additional Information

Gene ID	25989
Other Names	ULK3
Dilution	WB~~1:1000-1:5000 IHC-P~~N/A FC~~1:10-1:100
Format	Liquid in 50mM Tris-Glycine(pH 7.4), 0.15M NaCl, 40%Glycerol, 0.01% sodium azide and 0.05% BSA.
Storage	Store at 4°C short term. Aliquot and store at -20°C long term. Avoid freeze/thaw cycles.

Protein Information

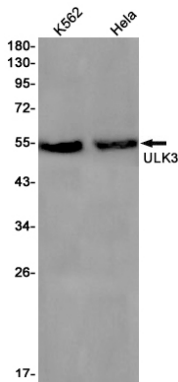
Name	ULK3
Function	Serine/threonine protein kinase that acts as a regulator of Sonic hedgehog (SHH) signaling and autophagy. Acts as a negative regulator of SHH signaling in the absence of SHH ligand: interacts with SUFU, thereby inactivating the protein kinase activity and preventing phosphorylation of GLI proteins (GLI1, GLI2 and/or GLI3). Positively regulates SHH signaling in the presence of SHH: dissociates from SUFU, autophosphorylates and mediates phosphorylation of GLI2, activating it and promoting its nuclear translocation. Phosphorylates in vitro GLI2, as well as GLI1 and GLI3, although less efficiently. Also acts as a regulator of autophagy: following cellular senescence, able to induce autophagy.
Cellular Location	Cytoplasm. Note=Localizes to pre-autophagosomal structure during cellular senescence
Tissue Location	Widely expressed. Highest levels observed in fetal brain. In adult tissues, high

levels in brain, liver and kidney, moderate levels in testis and adrenal gland and low levels in heart, lung, stomach, thymus, prostate and placenta. In the brain, highest expression in the hippocampus, high levels also detected in the cerebellum, olfactory bulb and optic nerve. In the central nervous system, lowest levels in the spinal cord

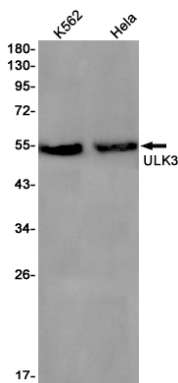
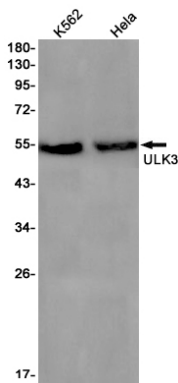
Background

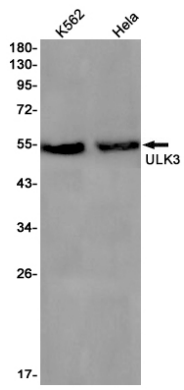
Serine/threonine protein kinase which enhances GLI1 and GLI2 transcriptional activity and consequently positively regulates GLI-dependent SHH signaling. May exert this function by promoting GLI1 nuclear localization. Phosphorylates in vitro GLI2, as well as GLI1 and GLI3, although less efficiently.

Images



Western blot analysis of ULK3 in K562, HeLa lysates using ULK3 antibody.





Please note: All products are 'FOR RESEARCH USE ONLY. NOT FOR USE IN DIAGNOSTIC OR THERAPEUTIC PROCEDURES'.