

SLAMF6 Rabbit mAb

Catalog # AP76089

Product Information

Application	WB, FC, IP
Primary Accession	Q96DU3
Reactivity	Human
Host	Rabbit
Clonality	Monoclonal Antibody
Isotype	IgG
Conjugate	Unconjugated
Purification	Affinity Purified
Calculated MW	37345

Additional Information

Gene ID	114836
Other Names	SLAMF6
Dilution	WB~~1:500-1:1000 FC~~1:200-1:500 IP~~1:20-1:50
Format	Liquid in 50mM Tris-Glycine(pH 7.4), 0.15M NaCl, 40%Glycerol, 0.01% sodium azide and 0.05% BSA.
Storage	Store at 4°C short term. Aliquot and store at -20°C long term. Avoid freeze/thaw cycles.

Protein Information

Name	SLAMF6
Synonyms	KALI
Function	Self-ligand receptor of the signaling lymphocytic activation molecule (SLAM) family. SLAM receptors triggered by homo- or heterotypic cell-cell interactions are modulating the activation and differentiation of a wide variety of immune cells and thus are involved in the regulation and interconnection of both innate and adaptive immune response. Activities are controlled by presence or absence of small cytoplasmic adapter proteins, SH2D1A/SAP and/or SH2D1B/EAT-2. Triggers cytolytic activity only in natural killer cells (NK) expressing high surface densities of natural cytotoxicity receptors (PubMed: 11489943 , PubMed: 16920955). Positive signaling in NK cells implicates phosphorylation of VAV1. NK cell activation seems to depend on SH2D1B and not on SH2D1A (PubMed: 16920955). In conjunction with SLAMF1 controls the transition between positive selection and the subsequent expansion and differentiation of the thymocytic natural killer T (NKT) cell

lineage (By similarity). Promotes T-cell differentiation into a helper T-cell Th17 phenotype leading to increased IL-17 secretion; the costimulatory activity requires SH2D1A (PubMed:16920955, PubMed:22184727). Promotes recruitment of RORC to the IL-17 promoter (PubMed:22989874). In conjunction with SLAMF1 and CD84/SLAMF5 may be a negative regulator of the humoral immune response. In the absence of SH2D1A/SAP can transmit negative signals to CD4(+) T- cells and NKT cells. Negatively regulates germinal center formation by inhibiting T-cell:B-cell adhesion; the function probably implicates increased association with PTPN6/SHP-1 via ITSMs in absence of SH2D1A/SAP. However, reported to be involved in maintaining B-cell tolerance in germinal centers and in preventing autoimmunity (By similarity).

Cellular Location

Cell membrane; Single-pass type I membrane protein

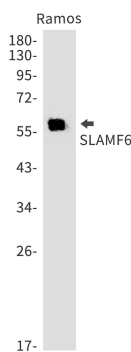
Tissue Location

Expressed by all (resting and activated) natural killer cells (NK), T- and B-lymphocytes (PubMed:11489943). Increased surface expression on T-cells of systemic lupus erythematosus (SLE) patients (PubMed:22184727).

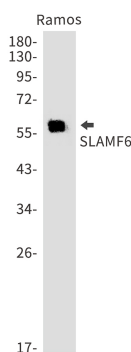
Background

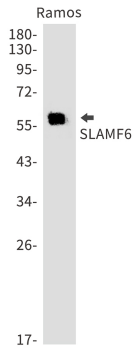
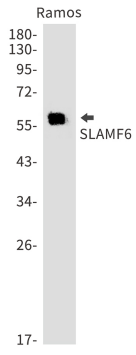
Self-ligand receptor of the signaling lymphocytic activation molecule (SLAM) family. SLAM receptors triggered by homo- or heterotypic cell-cell interactions are modulating the activation and differentiation of a wide variety of immune cells and thus are involved in the regulation and interconnection of both innate and adaptive immune response. Promotes T-cell differentiation into a helper T-cell Th17 phenotype leading to increased IL-17 secretion.

Images



Western blot analysis of SLAMF6 in Ramos lysates using SLAMF6 antibody.





Please note: All products are 'FOR RESEARCH USE ONLY. NOT FOR USE IN DIAGNOSTIC OR THERAPEUTIC PROCEDURES'.