

LUM Antibody (N-term)

Purified Rabbit Polyclonal Antibody (Pab)

Catalog # AP7605a

Product Information

Application	WB, IHC-P, FC, E
Primary Accession	P51884
Other Accession	P51886 , P51885
Reactivity	Human, Mouse
Predicted	Rat
Host	Rabbit
Clonality	Polyclonal
Isotype	Rabbit IgG
Clone Names	RB18422
Calculated MW	38429
Antigen Region	64-91

Additional Information

Gene ID	4060
Other Names	Lumican, Keratan sulfate proteoglycan lumican, KSPG lumican, LUM, LDC, SLRR2D
Target/Specificity	This LUM antibody is generated from rabbits immunized with a KLH conjugated synthetic peptide between 64-91 amino acids from the N-terminal region of human LUM.
Dilution	WB~~1:1000 IHC-P~~1:100~500 FC~~1:10~50 E~~Use at an assay dependent concentration.
Format	Purified polyclonal antibody supplied in PBS with 0.09% (W/V) sodium azide. This antibody is prepared by Saturated Ammonium Sulfate (SAS) precipitation followed by dialysis against PBS.
Storage	Maintain refrigerated at 2-8°C for up to 2 weeks. For long term storage store at -20°C in small aliquots to prevent freeze-thaw cycles.
Precautions	LUM Antibody (N-term) is for research use only and not for use in diagnostic or therapeutic procedures.

Protein Information

Name	LUM
Synonyms	LDC, SLRR2D

Cellular Location	Secreted, extracellular space, extracellular matrix
Tissue Location	Cornea and other tissues.

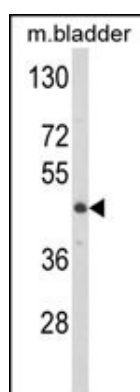
Background

LUM is a member of the small leucine-rich proteoglycan (SLRP) family that includes decorin, biglycan, fibromodulin, keratocan, epiphykan, and osteoglycin. In these bifunctional molecules, this protein moiety binds collagen fibrils and the highly charged hydrophilic glycosaminoglycans regulate interfibrillar spacings. The protein is the major keratan sulfate proteoglycan of the cornea but is also distributed in interstitial collagenous matrices throughout the body. Lumican may regulate collagen fibril organization and circumferential growth, corneal transparency, and epithelial cell migration and tissue repair.

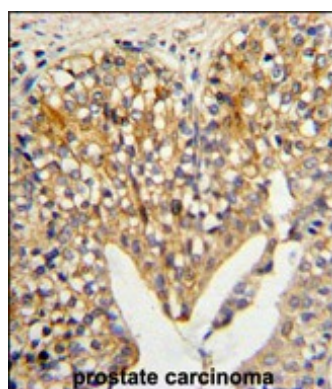
References

Wang,P., Li,S. Invest. Ophthalmol. Vis. Sci. 50 (4), 1546-1551 (2009)
Matsuda,Y., Yamamoto,T. Int. J. Oncol. 33 (6), 1177-1185 (2008)
Kelemen,L.E., Couch,F.J. Breast Cancer Res. 10 (6), R98 (2008)

Images

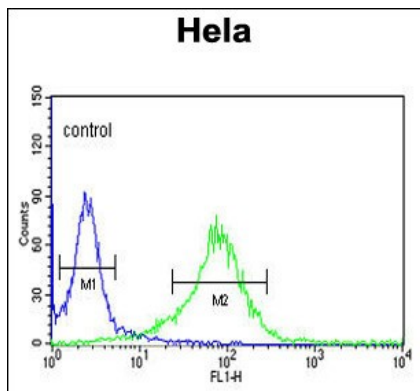


Western blot analysis of LUM Antibody (N-term) (Cat.#AP7605a) in mouse bladder tissue lysates (35ug/lane). LUM (arrow) was detected using the purified Pab.



Formalin-fixed and paraffin-embedded human prostate carcinoma reacted with LUM Antibody (N-term), which was peroxidase-conjugated to the secondary antibody, followed by DAB staining. This data demonstrates the use of this antibody for immunohistochemistry; clinical relevance has not been evaluated.

LUM Antibody (N-term) (Cat. #AP7605a) flow cytometric analysis of Hela cells (right histogram) compared to a negative control cell (left histogram).FITC-conjugated goat-anti-rabbit secondary antibodies were used for the analysis.



Citations

- [Label-free quantitative proteomic analysis of right ventricular remodeling in infant Tetralogy of Fallot patients.](#)

Please note: All products are 'FOR RESEARCH USE ONLY. NOT FOR USE IN DIAGNOSTIC OR THERAPEUTIC PROCEDURES'.