

NOMO1 Antibody (S1205)

Affinity Purified Rabbit Polyclonal Antibody (Pab)

Catalog # AP7596d

Product Information

Application	WB, E
Primary Accession	Q15155
Other Accession	P69849 , Q5JPE7
Reactivity	Human
Host	Rabbit
Clonality	Polyclonal
Isotype	Rabbit IgG
Clone Names	RB15368
Calculated MW	134324
Antigen Region	1187-1216

Additional Information

Gene ID	23420
Other Names	Nodal modulator 1, pM5 protein, NOMO1, PM5
Target/Specificity	This NOMO1 antibody is generated from rabbits immunized with a KLH conjugated synthetic peptide between 1187-1216 amino acids from human NOMO1.
Dilution	WB~~1:1000 E~~Use at an assay dependent concentration.
Format	Purified polyclonal antibody supplied in PBS with 0.09% (W/V) sodium azide. This antibody is purified through a protein A column, followed by peptide affinity purification.
Storage	Maintain refrigerated at 2-8°C for up to 2 weeks. For long term storage store at -20°C in small aliquots to prevent freeze-thaw cycles.
Precautions	NOMO1 Antibody (S1205) is for research use only and not for use in diagnostic or therapeutic procedures.

Protein Information

Name	NOMO1
Synonyms	PM5
Function	Component of the multi-pass translocon (MPT) complex that mediates insertion of multi-pass membrane proteins into the lipid bilayer of

membranes (PubMed:[32820719](#), PubMed:[36261522](#)). The MPT complex takes over after the SEC61 complex: following membrane insertion of the first few transmembrane segments of proteins by the SEC61 complex, the MPT complex occludes the lateral gate of the SEC61 complex to promote insertion of subsequent transmembrane regions (PubMed:[36261522](#)).

Cellular Location	Endoplasmic reticulum membrane; Single-pass type I membrane protein
Tissue Location	Expressed in colon tumor tissue and in adjacent normal colonic mucosa.

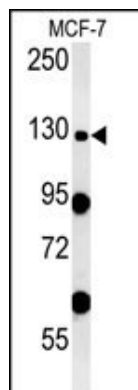
Background

NOMO1 was originally thought to be related to the collagenase family. The gene encoding NOMO1 is one of three highly similar genes in a region of duplication located on the p arm of chromosome 16. These three genes encode closely related proteins that may have the same function. The protein encoded by one of these genes has been identified as part of a protein complex that participates in the Nodal signaling pathway during vertebrate development.

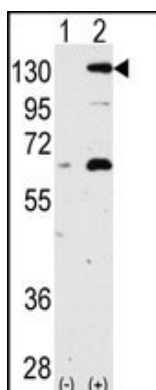
References

Blackshaw,S., PLoS Biol. 2 (9), E247 (2004)

Images



NOMO1-S1205 (Cat.#AP7596d) western blot analysis in MCF-7 cell line lysates (35ug/lane). This demonstrates the NOMO1 antibody detected the NOMO1 protein (arrow).



Western blot analysis of NOMO1 (arrow) using rabbit polyclonal NOMO1 Antibody (S1205) (Cat.#AP7596d). 293 cell lysates (2 ug/lane) either nontransfected (Lane 1) or transiently transfected with NOMO1 gene (Lane 2) (Origene Technologies).

Please note: All products are 'FOR RESEARCH USE ONLY. NOT FOR USE IN DIAGNOSTIC OR THERAPEUTIC PROCEDURES'.