

# PSF1 Rabbit mAb

Catalog # AP75966

## Product Information

---

<b>Application</b>	WB, IP, ICC
<b>Primary Accession</b>	<a href="#">Q14691</a>
<b>Reactivity</b>	Human, Mouse, Rat
<b>Host</b>	Rabbit
<b>Clonality</b>	Monoclonal Antibody
<b>Calculated MW</b>	22988

## Additional Information

---

<b>Gene ID</b>	9837
<b>Other Names</b>	GINS1
<b>Dilution</b>	WB~~1/500-1/1000 IP~~N/A ICC~~N/A
<b>Format</b>	50mM Tris-Glycine(pH 7.4), 0.15M NaCl, 40%Glycerol, 0.01% sodium azide and 0.05% BSA.
<b>Storage</b>	Store at 4°C short term. Aliquot and store at -20°C long term. Avoid freeze/thaw cycles.

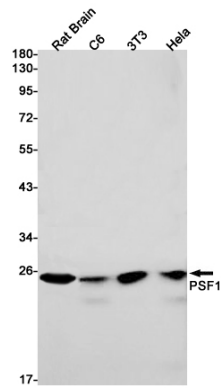
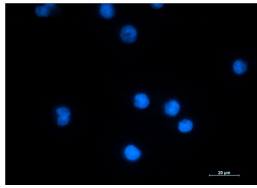
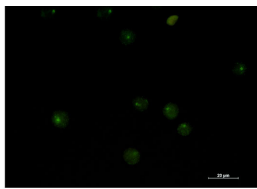
## Protein Information

---

<b>Name</b>	GINS1 ( <a href="#">HGNC:28980</a> )
<b>Synonyms</b>	KIAA0186, PSF1
<b>Function</b>	Required for correct functioning of the GINS complex, a complex that plays an essential role in the initiation of DNA replication, and progression of DNA replication forks (PubMed: <a href="#">17417653</a> , PubMed: <a href="#">28414293</a> ). GINS complex is a core component of CDC45-MCM-GINS (CMG) helicase, the molecular machine that unwinds template DNA during replication, and around which the replisome is built (PubMed: <a href="#">32453425</a> , PubMed: <a href="#">34694004</a> , PubMed: <a href="#">34700328</a> , PubMed: <a href="#">35585232</a> ).
<b>Cellular Location</b>	Nucleus. Chromosome. Note=Associates with chromatin

## Images

---



Please note: All products are 'FOR RESEARCH USE ONLY. NOT FOR USE IN DIAGNOSTIC OR THERAPEUTIC PROCEDURES'.