

# PRC1 Rabbit mAb

Catalog # AP75945

## Product Information

---

<b>Application</b>	WB, IHC-P, FC
<b>Primary Accession</b>	<a href="#">O43663</a>
<b>Reactivity</b>	Rat, Human, Mouse
<b>Host</b>	Rabbit
<b>Clonality</b>	Monoclonal Antibody
<b>Isotype</b>	IgG
<b>Conjugate</b>	Unconjugated
<b>Purification</b>	Affinity Purified
<b>Calculated MW</b>	71607

## Additional Information

---

<b>Gene ID</b>	9055
<b>Other Names</b>	PRC1
<b>Dilution</b>	WB~~1:500-1:1000 IHC-P~~N/A FC~~1:20-1:50
<b>Format</b>	Liquid in 50mM Tris-Glycine(pH 7.4), 0.15M NaCl, 40%Glycerol, 0.01% sodium azide and 0.05% BSA.
<b>Storage</b>	Store at 4°C short term. Aliquot and store at -20°C long term. Avoid freeze/thaw cycles.

## Protein Information

---

<b>Name</b>	PRC1 ( <a href="#">HGNC:9341</a> )
<b>Function</b>	Key regulator of cytokinesis that cross-links antiparrallel microtubules at an average distance of 35 nM. Essential for controlling the spatiotemporal formation of the midzone and successful cytokinesis. Required for KIF14 localization to the central spindle and midbody. Required to recruit PLK1 to the spindle. Stimulates PLK1 phosphorylation of RACGAP1 to allow recruitment of ECT2 to the central spindle. Acts as an oncogene for promoting bladder cancer cells proliferation, apoptosis inhibition and carcinogenic progression (PubMed: <a href="#">17409436</a> ).
<b>Cellular Location</b>	Nucleus. Cytoplasm. Cytoplasm, cytoskeleton, spindle pole. Midbody. Chromosome. Note=Colocalized with KIF20B in the nucleus of bladder carcinoma cells at the interphase. Colocalized with KIF20B in bladder carcinoma cells at prophase, metaphase, early anaphase, at the midzone in late anaphase and at the contractile ring in telophase (PubMed:17409436). Predominantly localized to the nucleus of interphase cells. During mitosis

becomes associated with the mitotic spindle poles and localizes with the cell midbody during cytokinesis Co-localizes with PRC1 in early mitosis and at the spindle midzone from anaphase B to telophase (PubMed:15297875, PubMed:15625105)

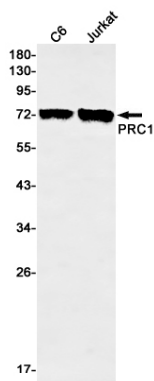
## Tissue Location

Overexpressed in bladder cancer cells (PubMed:17409436).

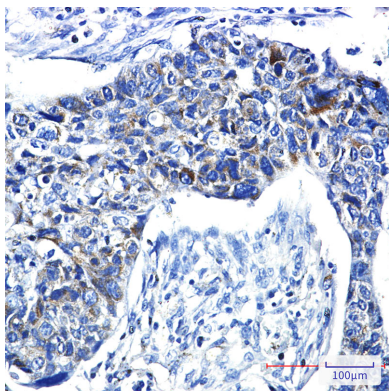
## Background

Cross-links antiparallel microtubules at an average distance of 35 nM. Essential for controlling the spatiotemporal formation of the midzone and successful cytokinesis. Required for KIF14 localization to the central spindle and midbody.

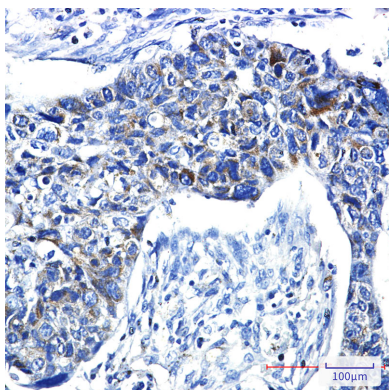
## Images

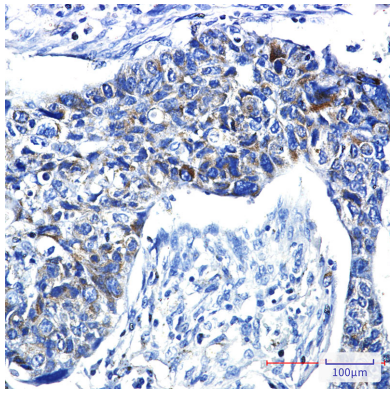


Western blot analysis of PRC1 in C6, Jurkat lysates using PRC1 antibody.



Immunohistochemistry analysis of paraffin-embedded Human lung cancer using PRC1 antibody. High-pressure and temperature Sodium Citrate pH 6.0 was used for antigen retrieval.





Please note: All products are 'FOR RESEARCH USE ONLY. NOT FOR USE IN DIAGNOSTIC OR THERAPEUTIC PROCEDURES'.