

PPP2R5D Rabbit mAb

Catalog # AP75941

Product Information

Application	WB, IHC-P, FC, IP
Primary Accession	Q14738
Reactivity	Rat, Human, Mouse
Host	Rabbit
Clonality	Monoclonal Antibody
Isotype	IgG
Conjugate	Unconjugated
Purification	Affinity Purified
Calculated MW	69992

Additional Information

Gene ID	5528
Other Names	PPP2R5D
Dilution	WB~~1:1000-1:5000 IHC-P~~N/A FC~~1:20-1:50 IP~~1:20-1:50
Format	Liquid in 50mM Tris-Glycine(pH 7.4), 0.15M NaCl, 40%Glycerol, 0.01% sodium azide and 0.05% BSA.
Storage	Store at 4°C short term. Aliquot and store at -20°C long term. Avoid freeze/thaw cycles.

Protein Information

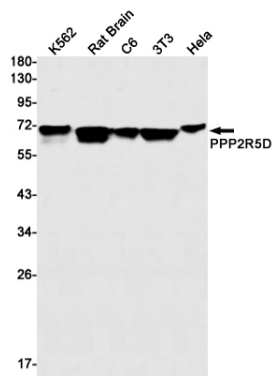
Name	PPP2R5D
Function	The B regulatory subunit might modulate substrate selectivity and catalytic activity, and might also direct the localization of the catalytic enzyme to a particular subcellular compartment.
Cellular Location	Cytoplasm. Nucleus. Note=Nuclear in interphase, nuclear during mitosis
Tissue Location	Isoform Delta-2 is widely expressed. Isoform Delta- 1 is highly expressed in brain

Background

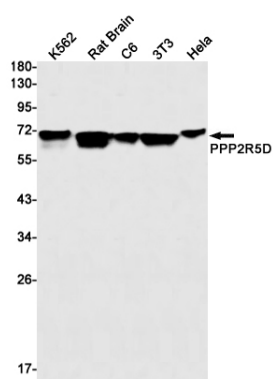
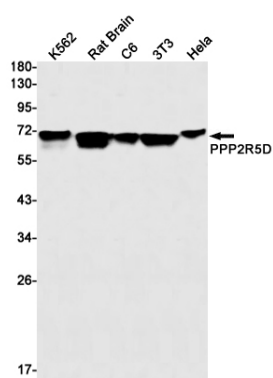
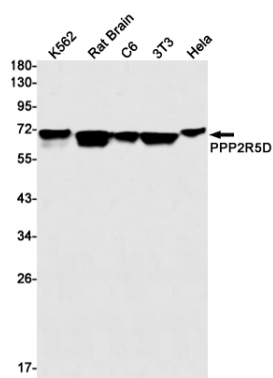
The product of this gene belongs to the phosphatase 2A regulatory subunit B family. Protein phosphatase 2A is one of the four major Ser/Thr phosphatases, and it is implicated in the negative control of cell growth and

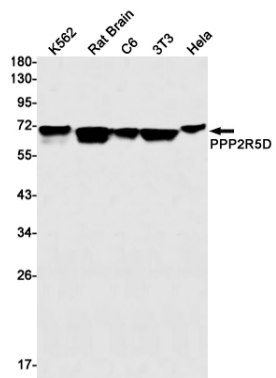
division. It consists of a common heteromeric core enzyme, which is composed of a catalytic subunit and a constant regulatory subunit, that associates with a variety of regulatory subunits. The B regulatory subunit might modulate substrate selectivity and catalytic activity. This gene encodes a delta isoform of the regulatory subunit B56 subfamily. Alternatively spliced transcript variants encoding different isoforms have been identified.

Images



Western blot analysis of PPP2R5D in K562, rat Brain, C6, 3T3, HeLa lysates using PPP2R5D antibody.





Please note: All products are 'FOR RESEARCH USE ONLY. NOT FOR USE IN DIAGNOSTIC OR THERAPEUTIC PROCEDURES'.