

PAI1 Rabbit mAb

Catalog # AP75863

Product Information

Application	WB
Primary Accession	P05121
Reactivity	Human, Mouse
Host	Rabbit
Clonality	Monoclonal Antibody
Calculated MW	45060

Additional Information

Gene ID	5054
Other Names	SERPINE1
Dilution	WB~~1/500-1/1000
Format	50mM Tris-Glycine(pH 7.4), 0.15M NaCl, 40%Glycerol, 0.01% sodium azide and 0.05% BSA.
Storage	Store at 4°C short term. Aliquot and store at -20°C long term. Avoid freeze/thaw cycles.

Protein Information

Name	SERPINE1
Synonyms	PAI1, PLANH1
Function	Serine protease inhibitor. Inhibits TMPRSS7 (PubMed: 15853774). Is a primary inhibitor of tissue-type plasminogen activator (PLAT) and urokinase-type plasminogen activator (PLAU). As PLAT inhibitor, it is required for fibrinolysis down-regulation and is responsible for the controlled degradation of blood clots (PubMed: 17912461 , PubMed: 8481516 , PubMed: 9207454 , PubMed: 21925150). As PLAU inhibitor, it is involved in the regulation of cell adhesion and spreading (PubMed: 9175705). Acts as a regulator of cell migration, independently of its role as protease inhibitor (PubMed: 15001579 , PubMed: 9168821). It is required for stimulation of keratinocyte migration during cutaneous injury repair (PubMed: 18386027). It is involved in cellular and replicative senescence (PubMed: 16862142). Plays a role in alveolar type 2 cells senescence in the lung (By similarity). Is involved in the regulation of cementogenic differentiation of periodontal ligament stem cells, and regulates odontoblast differentiation and dentin formation during odontogenesis (PubMed: 25808697 , PubMed: 27046084).

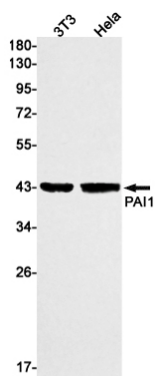
Cellular Location

Secreted.

Tissue Location

Expressed in endothelial cells (PubMed:2430793, PubMed:3097076). Found in plasma, platelets, and hepatoma and fibrosarcoma cells.

Images



Please note: All products are 'FOR RESEARCH USE ONLY. NOT FOR USE IN DIAGNOSTIC OR THERAPEUTIC PROCEDURES'.