

p150 CAF1 Rabbit mAb

Catalog # AP75846

Product Information

Application	WB, IHC-P, IHC-F, IP, ICC
Primary Accession	Q13111
Reactivity	Human
Host	Rabbit
Clonality	Monoclonal Antibody
Calculated MW	106910

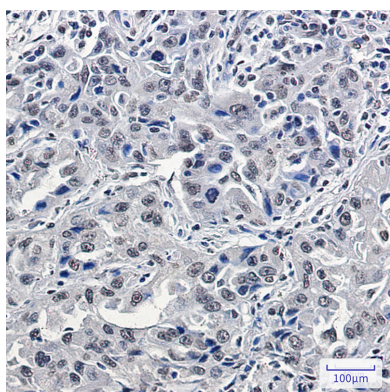
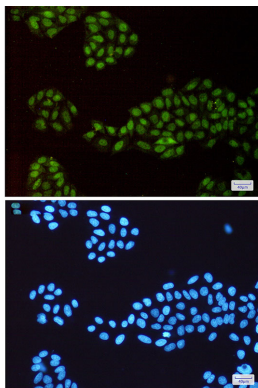
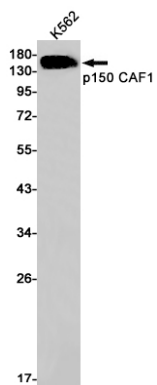
Additional Information

Gene ID	10036
Other Names	CHAF1A
Dilution	WB~~1/500-1/1000 IHC-P~~N/A IHC-F~~N/A IP~~N/A ICC~~N/A
Format	50mM Tris-Glycine(pH 7.4), 0.15M NaCl, 40%Glycerol, 0.01% sodium azide and 0.05% BSA.
Storage	Store at 4°C short term. Aliquot and store at -20°C long term. Avoid freeze/thaw cycles.

Protein Information

Name	CHAF1A (HGNC:1910)
Synonyms	CAF, CAF1P150
Function	Acts as a component of the histone chaperone complex chromatin assembly factor 1 (CAF-1), which assembles histone octamers onto DNA during replication and repair. CAF-1 performs the first step of the nucleosome assembly process, bringing newly synthesized histones H3 and H4 to replicating DNA; histones H2A/H2B can bind to this chromatin precursor subsequent to DNA replication to complete the histone octamer. It may play a role in heterochromatin maintenance in proliferating cells by bringing newly synthesized cbx proteins to heterochromatic DNA replication foci.
Cellular Location	Nucleus. Note=DNA replication foci

Images



Please note: All products are 'FOR RESEARCH USE ONLY. NOT FOR USE IN DIAGNOSTIC OR THERAPEUTIC PROCEDURES'.