

# ORP1 Rabbit mAb

Catalog # AP75841

## Product Information

---

<b>Application</b>	WB, IP, ICC
<b>Primary Accession</b>	<a href="#">Q9BXW6</a>
<b>Reactivity</b>	Human, Mouse, Rat
<b>Host</b>	Rabbit
<b>Clonality</b>	Monoclonal Antibody
<b>Calculated MW</b>	108470

## Additional Information

---

<b>Gene ID</b>	114876
<b>Other Names</b>	OSBPL1A
<b>Dilution</b>	WB~~1/500-1/1000 IP~~1/20 ICC~~N/A
<b>Format</b>	50mM Tris-Glycine(pH 7.4), 0.15M NaCl, 40%Glycerol, 0.01% sodium azide and 0.05% BSA.
<b>Storage</b>	Store at 4°C short term. Aliquot and store at -20°C long term. Avoid freeze/thaw cycles.

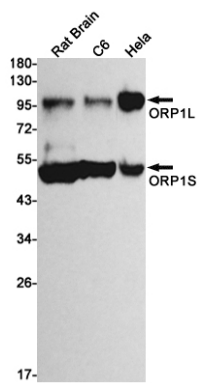
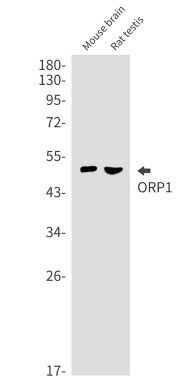
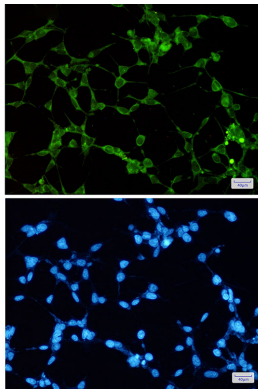
## Protein Information

---

<b>Name</b>	OSBPL1A ( <a href="#">HGNC:16398</a> )
<b>Function</b>	Binds phospholipids; exhibits strong binding to phosphatidic acid and weak binding to phosphatidylinositol 3-phosphate (By similarity). Stabilizes GTP-bound RAB7A on late endosomes/lysosomes and alters functional properties of late endocytic compartments via its interaction with RAB7A (PubMed: <a href="#">16176980</a> ). Binds 25-hydroxycholesterol and cholesterol (PubMed: <a href="#">17428193</a> ).
<b>Cellular Location</b>	Late endosome. Note=Colocalizes with RAB7A, RAB9A and LAMP1 in late endosomes

## Images

---



Please note: All products are 'FOR RESEARCH USE ONLY. NOT FOR USE IN DIAGNOSTIC OR THERAPEUTIC PROCEDURES'.