

N WASP Rabbit mAb

Catalog # AP75836

Product Information

Application	WB, IHC-P, FC
Primary Accession	O00401
Reactivity	Human, Mouse
Host	Rabbit
Clonality	Monoclonal Antibody
Isotype	IgG
Conjugate	Unconjugated
Purification	Affinity Purified
Calculated MW	54827

Additional Information

Gene ID	8976
Other Names	WASL
Dilution	WB~~1:1000-1:5000 IHC-P~~N/A FC~~1:100-1:200
Format	Liquid in 50mM Tris-Glycine(pH 7.4), 0.15M NaCl, 40%Glycerol, 0.01% sodium azide and 0.05% BSA.
Storage	Store at 4°C short term. Aliquot and store at -20°C long term. Avoid freeze/thaw cycles.

Protein Information

Name	WASL
Function	Regulates actin polymerization by stimulating the actin- nucleating activity of the Arp2/3 complex (PubMed: 16767080 , PubMed: 19366662 , PubMed: 19487689 , PubMed: 22847007 , PubMed: 22921828 , PubMed: 9422512). Involved in various processes, such as mitosis and cytokinesis, via its role in the regulation of actin polymerization (PubMed: 19366662 , PubMed: 19487689 , PubMed: 22847007 , PubMed: 22921828 , PubMed: 9422512). Together with CDC42, involved in the extension and maintenance of the formation of thin, actin-rich surface projections called filopodia (PubMed: 9422512). In addition to its role in the cytoplasm, also plays a role in the nucleus by regulating gene transcription, probably by promoting nuclear actin polymerization (PubMed: 16767080). Binds to HSF1/HSTF1 and forms a complex on heat shock promoter elements (HSE) that negatively regulates HSP90 expression (By similarity). Plays a role in dendrite spine morphogenesis (By similarity). Decreasing levels of DNMBP (using antisense RNA) alters apical junction morphology in cultured

enterocytes, junctions curve instead of being nearly linear
(PubMed:[19767742](#)).

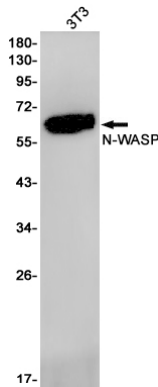
Cellular Location

Cytoplasm, cytoskeleton. Nucleus Cytoplasm
{ECO:0000250|UniProtKB:Q91YD9}. Note=Preferentially localized in the cytoplasm when phosphorylated and in the nucleus when unphosphorylated (By similarity). Exported from the nucleus by an nuclear export signal (NES)-dependent mechanism to the cytoplasm (By similarity).
{ECO:0000250|UniProtKB:Q91YD9}

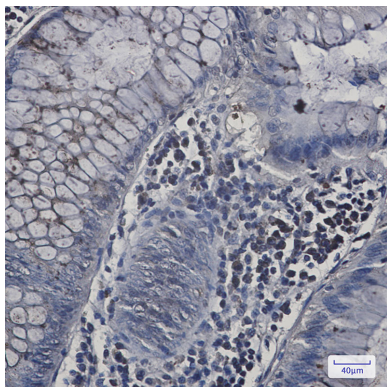
Background

This gene encodes a member of the Wiskott-Aldrich syndrome (WAS) protein family. Wiskott-Aldrich syndrome proteins share similar domain structure, and associate with a variety of signaling molecules to alter the actin cytoskeleton. The encoded protein is highly expressed in neural tissues, and interacts with several proteins involved in cytoskeletal organization, including cell division control protein 42 (CDC42) and the actin-related protein-2/3 (ARP2/3) complex. The encoded protein may be involved in the formation of long actin microspikes, and in neurite extension.

Images

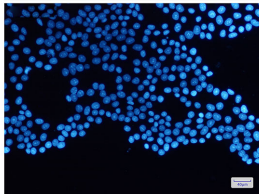
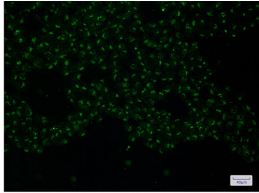
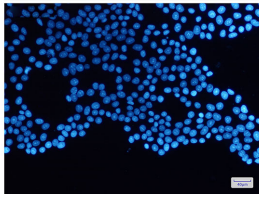
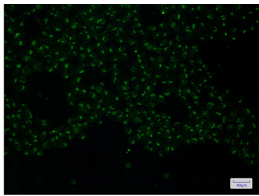


Western blot analysis of NWASP in 3T3 lysates using N WASP antibody.



Immunohistochemistry analysis of paraffin-embedded Human colon cancer using NWASP antibody. High-pressure and temperature Sodium Citrate pH 6.0 was used for antigen retrieval.

Immunocytochemistry analysis of NWASP (green) in HeLa using NWASP antibody, and DAPI (blue)



Please note: All products are 'FOR RESEARCH USE ONLY. NOT FOR USE IN DIAGNOSTIC OR THERAPEUTIC PROCEDURES'.