

Nesprin3 Rabbit mAb

Catalog # AP75797

Product Information

Application	WB
Primary Accession	Q6ZMZ3
Reactivity	Human
Host	Rabbit
Clonality	Monoclonal Antibody
Calculated MW	112216

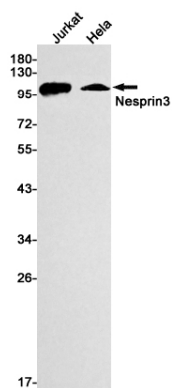
Additional Information

Gene ID	161176
Other Names	SYNE3
Dilution	WB~~1/500-1/1000
Format	50mM Tris-Glycine(pH 7.4), 0.15M NaCl, 40%Glycerol, 0.01% sodium azide and 0.05% BSA.
Storage	Store at 4°C short term. Aliquot and store at -20°C long term. Avoid freeze/thaw cycles.

Protein Information

Name	SYNE3 (HGNC:19861)
Function	As a component of the LINC (Linker of Nucleoskeleton and Cytoskeleton) complex involved in the connection between the nuclear lamina and the cytoskeleton. The nucleocytoplasmic interactions established by the LINC complex play an important role in the transmission of mechanical forces across the nuclear envelope and in nuclear movement and positioning. Probable anchoring protein which tethers the nucleus to the cytoskeleton by binding PLEC which can associate with the intermediate filament system. Plays a role in the regulation of aortic epithelial cell morphology, and is required for flow-induced centrosome polarization and directional migration in aortic endothelial cells.
Cellular Location	Nucleus outer membrane; Single-pass type IV membrane protein. Nucleus envelope. Rough endoplasmic reticulum
Tissue Location	Expressed in aortic endothelial cells (at protein level).

Images



Please note: All products are 'FOR RESEARCH USE ONLY. NOT FOR USE IN DIAGNOSTIC OR THERAPEUTIC PROCEDURES'.