

# MYO19 Rabbit mAb

Catalog # AP75766

## Product Information

---

Application	WB
Primary Accession	<a href="#">Q96H55</a>
Reactivity	Human, Mouse
Host	Rabbit
Clonality	Monoclonal Antibody
Calculated MW	109135

## Additional Information

---

Gene ID	80179
Other Names	MYO19
Dilution	WB~~1/500-1/1000
Format	50mM Tris-Glycine(pH 7.4), 0.15M NaCl, 40%Glycerol, 0.01% sodium azide and 0.05% BSA.
Storage	Store at 4°C short term. Aliquot and store at -20°C long term. Avoid freeze/thaw cycles.

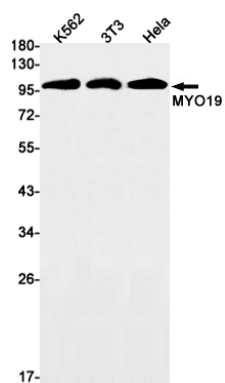
## Protein Information

---

Name	MYO19 {ECO:0000303   PubMed:19932026, ECO:0000312   HGNC:HGNC:26234}
Function	Actin-based motor molecule with ATPase activity that localizes to the mitochondrion outer membrane (PubMed: <a href="#">19932026</a> , PubMed: <a href="#">23568824</a> , PubMed: <a href="#">25447992</a> ). Motor protein that moves towards the plus-end of actin filaments (By similarity). Required for mitochondrial inheritance during mitosis (PubMed: <a href="#">25447992</a> ). May be involved in mitochondrial transport or positioning (PubMed: <a href="#">23568824</a> ).
Cellular Location	Mitochondrion outer membrane; Peripheral membrane protein. Cytoplasm, cytoskeleton
Tissue Location	Widely expressed in multiple tissues and cell lines.

## Images

---



Please note: All products are 'FOR RESEARCH USE ONLY. NOT FOR USE IN DIAGNOSTIC OR THERAPEUTIC PROCEDURES'.