

# MS2 Rabbit mAb

Catalog # AP75739

## Product Information

---

<b>Application</b>	WB, IP
<b>Primary Accession</b>	<a href="#">P78325</a>
<b>Reactivity</b>	Rat, Human, Mouse
<b>Host</b>	Rabbit
<b>Clonality</b>	Monoclonal Antibody
<b>Isotype</b>	IgG
<b>Conjugate</b>	Unconjugated
<b>Purification</b>	Affinity Purified
<b>Calculated MW</b>	88771

## Additional Information

---

<b>Gene ID</b>	101
<b>Other Names</b>	ADAM8
<b>Dilution</b>	WB~~1:1000-1:5000 IP~~1:20-1:50
<b>Format</b>	Liquid in 50mM Tris-Glycine(pH 7.4), 0.15M NaCl, 40%Glycerol, 0.01% sodium azide and 0.05% BSA.
<b>Storage</b>	Store at 4°C short term. Aliquot and store at -20°C long term. Avoid freeze/thaw cycles.

## Protein Information

---

<b>Name</b>	ADAM8
<b>Synonyms</b>	MS2
<b>Function</b>	Possible involvement in extravasation of leukocytes.
<b>Cellular Location</b>	Membrane; Single-pass type I membrane protein.
<b>Tissue Location</b>	Expressed on neutrophils and monocytes.

## Background

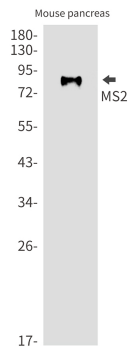
---

This gene encodes a member of the ADAM (a disintegrin and metalloprotease domain) family. Members of this family are membrane-anchored proteins structurally related to snake venom disintegrins, and have been implicated in a variety of biological processes involving cell-cell and cell-matrix interactions, including

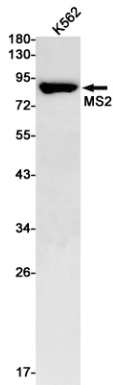
fertilization, muscle development, and neurogenesis. The protein encoded by this gene may be involved in cell adhesion during neurodegeneration, and it is thought to be a target for allergic respiratory diseases, including asthma. Alternative splicing results in multiple transcript variants.

## Images

---



Western blot analysis of MS2 in mouse pancreas lysates using MS2 antibody.



Western blot analysis of MS2 in K562 lysates using MS2 antibody.

Please note: All products are 'FOR RESEARCH USE ONLY. NOT FOR USE IN DIAGNOSTIC OR THERAPEUTIC PROCEDURES'.