

MRPS26 Rabbit mAb

Catalog # AP75737

Product Information

Application	WB
Primary Accession	Q9BYN8
Reactivity	Human
Host	Rabbit
Clonality	Monoclonal Antibody
Isotype	IgG
Conjugate	Unconjugated
Purification	Affinity Purified
Calculated MW	24212

Additional Information

Gene ID	64949
Other Names	MRPS26
Dilution	WB~~1:1000-1:5000
Format	Liquid in 50mM Tris-Glycine(pH 7.4), 0.15M NaCl, 40%Glycerol, 0.01% sodium azide and 0.05% BSA.
Storage	Store at 4°C short term. Aliquot and store at -20°C long term. Avoid freeze/thaw cycles.

Protein Information

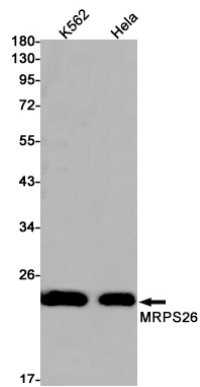
Name	MRPS26
Synonyms	C20orf193, RPMS13
Cellular Location	Mitochondrion.

Background

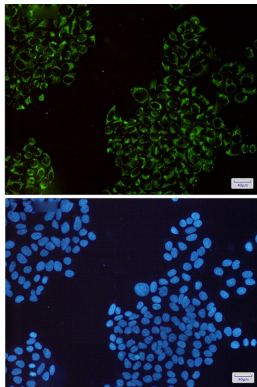
Mammalian mitochondrial ribosomal proteins are encoded by nuclear genes and help in protein synthesis within the mitochondrion. Mitochondrial ribosomes (mitoribosomes) consist of a small 28S subunit and a large 39S subunit. They have an estimated 75% protein to rRNA composition compared to prokaryotic ribosomes, where this ratio is reversed. Another difference between mammalian mitoribosomes and prokaryotic ribosomes is that the latter contain a 5S rRNA. Among different species, the proteins comprising the mitoribosome differ greatly in sequence, and sometimes in biochemical properties, which prevents easy recognition by sequence homology. This gene encodes a 28S subunit protein. This gene lies adjacent to and

downstream of the gonadotropin-releasing hormone precursor gene.

Images



Western blot analysis of MRPS26 in K562, HeLa lysates using MRPS26 antibody.



Immunocytochemistry analysis of MRPS26(green) in HeLa using MRPS26 antibody, and DAPI(blue)

Please note: All products are 'FOR RESEARCH USE ONLY. NOT FOR USE IN DIAGNOSTIC OR THERAPEUTIC PROCEDURES'.