

# MMP12 Rabbit mAb

Catalog # AP75728

## Product Information

---

<b>Application</b>	WB, IP
<b>Primary Accession</b>	<a href="#">P39900</a>
<b>Reactivity</b>	Human, Rat, Hamster
<b>Host</b>	Rabbit
<b>Clonality</b>	Monoclonal Antibody
<b>Calculated MW</b>	54002

## Additional Information

---

<b>Gene ID</b>	4321
<b>Other Names</b>	MMP12
<b>Dilution</b>	WB~~1/500-1/1000 IP~~1/20
<b>Format</b>	50mM Tris-Glycine(pH 7.4), 0.15M NaCl, 40%Glycerol, 0.01% sodium azide and 0.05% BSA.

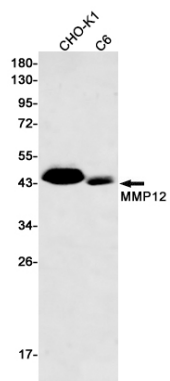
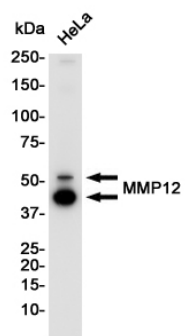
## Protein Information

---

<b>Name</b>	MMP12
<b>Synonyms</b>	HME
<b>Function</b>	May be involved in tissue injury and remodeling. Has significant elastolytic activity. Can accept large and small amino acids at the P1' site, but has a preference for leucine. Aromatic or hydrophobic residues are preferred at the P1 site, with small hydrophobic residues (preferably alanine) occupying P3.
<b>Cellular Location</b>	Secreted, extracellular space, extracellular matrix
<b>Tissue Location</b>	Found in alveolar macrophages but not in peripheral blood monocytes

## Images

---



Please note: All products are 'FOR RESEARCH USE ONLY. NOT FOR USE IN DIAGNOSTIC OR THERAPEUTIC PROCEDURES'.