

# MEKK2 Rabbit mAb

Catalog # AP75710

## Product Information

---

<b>Application</b>	WB, IP, ICC
<b>Primary Accession</b>	<a href="#">Q9Y2U5</a>
<b>Reactivity</b>	Human, Mouse, Rat
<b>Host</b>	Rabbit
<b>Clonality</b>	Monoclonal Antibody
<b>Calculated MW</b>	69741

## Additional Information

---

<b>Gene ID</b>	10746
<b>Other Names</b>	MAP3K2
<b>Dilution</b>	WB~~1/500-1/1000 IP~~N/A ICC~~N/A
<b>Format</b>	50mM Tris-Glycine(pH 7.4), 0.15M NaCl, 40%Glycerol, 0.01% sodium azide and 0.05% BSA.
<b>Storage</b>	Store at 4°C short term. Aliquot and store at -20°C long term. Avoid freeze/thaw cycles.

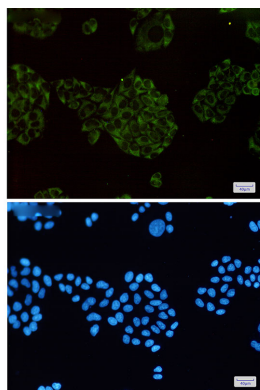
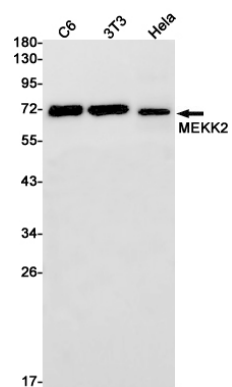
## Protein Information

---

<b>Name</b>	MAP3K2
<b>Synonyms</b>	MAPKKK2, MEKK2
<b>Function</b>	Component of a protein kinase signal transduction cascade. Regulates the JNK and ERK5 pathways by phosphorylating and activating MAP2K5 and MAP2K7 (By similarity). Plays a role in caveolae kiss-and- run dynamics.
<b>Cellular Location</b>	Cytoplasm. Nucleus. Note=Upon EGF stimulation, translocates into the nucleus

## Images

---



Please note: All products are 'FOR RESEARCH USE ONLY. NOT FOR USE IN DIAGNOSTIC OR THERAPEUTIC PROCEDURES'.