

# MCM7 Rabbit mAb

Catalog # AP75698

## Product Information

---

Application	WB
Primary Accession	<a href="#">P33993</a>
Reactivity	Human, Mouse, Rat
Host	Rabbit
Clonality	Monoclonal Antibody
Calculated MW	81308

## Additional Information

---

Gene ID	4176
Other Names	MCM7
Dilution	WB~~1/500-1/1000
Format	50mM Tris-Glycine(pH 7.4), 0.15M NaCl, 40%Glycerol, 0.01% sodium azide and 0.05% BSA.
Storage	Store at 4°C short term. Aliquot and store at -20°C long term. Avoid freeze/thaw cycles.

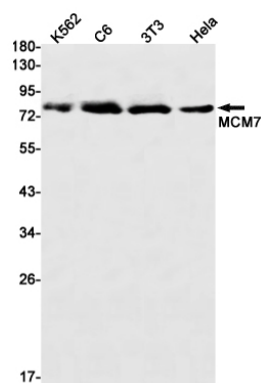
## Protein Information

---

Name	MCM7 ( <a href="#">HGNC:6950</a> )
Synonyms	CDC47, MCM2
Function	Acts as a component of the MCM2-7 complex (MCM complex) which is the replicative helicase essential for 'once per cell cycle' DNA replication initiation and elongation in eukaryotic cells. Core component of CDC45-MCM-GINS (CMG) helicase, the molecular machine that unwinds template DNA during replication, and around which the replisome is built (PubMed: <a href="#">25661590</a> , PubMed: <a href="#">32453425</a> , PubMed: <a href="#">34694004</a> , PubMed: <a href="#">34700328</a> , PubMed: <a href="#">35585232</a> , PubMed: <a href="#">9305914</a> ). The active ATPase sites in the MCM2-7 ring are formed through the interaction surfaces of two neighboring subunits such that a critical structure of a conserved arginine finger motif is provided in trans relative to the ATP-binding site of the Walker A box of the adjacent subunit. The six ATPase active sites, however, are likely to contribute differentially to the complex helicase activity (PubMed: <a href="#">32453425</a> ). Required for S-phase checkpoint activation upon UV-induced damage.
Cellular Location	Nucleus. Chromosome. Note=Associated with chromatin before the formation of nuclei and detaches from it as DNA replication progresses.

## Images

---



Please note: All products are 'FOR RESEARCH USE ONLY. NOT FOR USE IN DIAGNOSTIC OR THERAPEUTIC PROCEDURES'.