

LC3A Rabbit mAb

Catalog # AP75690

Product Information

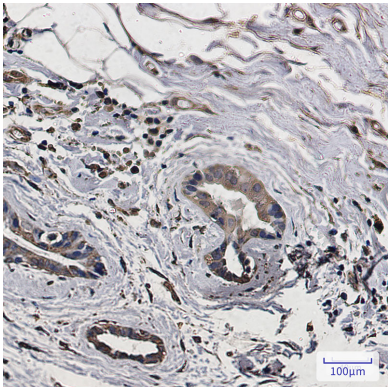
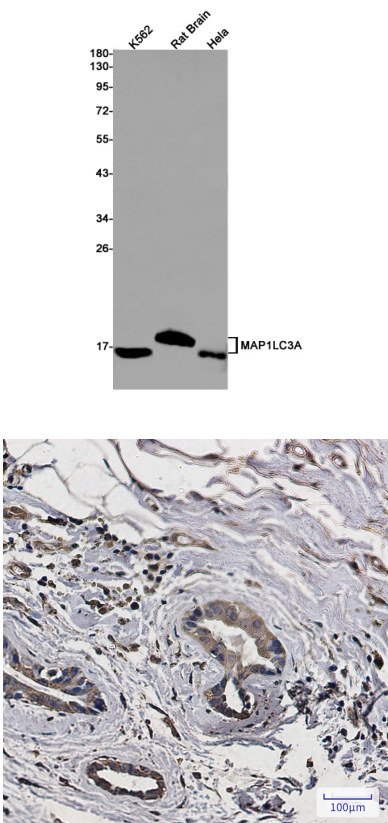
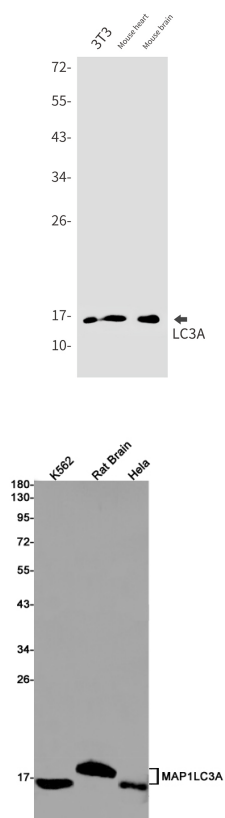
Application	WB, IHC-P, IP
Primary Accession	Q9H492
Reactivity	Human, Mouse, Rat
Host	Rabbit
Clonality	Monoclonal Antibody
Calculated MW	14272

Additional Information

Gene ID	84557
Other Names	MAP1LC3A
Dilution	WB~~1/500-1/1000 IHC-P~~N/A IP~~1/20
Format	50mM Tris-Glycine(pH 7.4), 0.15M NaCl, 40%Glycerol, 0.01% sodium azide and 0.05% BSA.
Storage	Store at 4°C short term. Aliquot and store at -20°C long term. Avoid freeze/thaw cycles.

Protein Information

Name	MAP1LC3A
Function	Ubiquitin-like modifier involved in formation of autophagosomal vacuoles (autophagosomes) (PubMed: 20713600 , PubMed: 24290141). While LC3s are involved in elongation of the phagophore membrane, the GABARAP/GATE-16 subfamily is essential for a later stage in autophagosome maturation (PubMed: 20713600). Through its interaction with the reticulophagy receptor TEX264, participates in the remodeling of subdomains of the endoplasmic reticulum into autophagosomes upon nutrient stress, which then fuse with lysosomes for endoplasmic reticulum turnover (PubMed: 31006537 , PubMed: 31006538).
Cellular Location	Cytoplasmic vesicle, autophagosome membrane; Lipid-anchor. Endomembrane system; Lipid-anchor. Cytoplasm, cytoskeleton {ECO:0000250 UniProtKB:Q91VR7}. Note=LC3-II binds to the autophagic membranes.
Tissue Location	Most abundant in heart, brain, liver, skeletal muscle and testis but absent in thymus and peripheral blood leukocytes



Please note: All products are 'FOR RESEARCH USE ONLY. NOT FOR USE IN DIAGNOSTIC OR THERAPEUTIC PROCEDURES'.