

MAD2L2 Rabbit mAb

Catalog # AP75687

Product Information

Application	WB, IP, ICC
Primary Accession	Q9UI95
Reactivity	Human
Host	Rabbit
Clonality	Monoclonal Antibody
Calculated MW	24334

Additional Information

Gene ID	10459
Other Names	MAD2L2
Dilution	WB~~1/500-1/1000 IP~~N/A ICC~~N/A
Format	50mM Tris-Glycine(pH 7.4), 0.15M NaCl, 40%Glycerol, 0.01% sodium azide and 0.05% BSA.

Protein Information

Name	MAD2L2
Synonyms	MAD2B, REV7
Function	<p>Adapter protein able to interact with different proteins and involved in different biological processes (PubMed:11459825, PubMed:11459826, PubMed:17296730, PubMed:17719540, PubMed:19443654, PubMed:29656893). Mediates the interaction between the error-prone DNA polymerase zeta catalytic subunit REV3L and the inserter polymerase REV1, thereby mediating the second polymerase switching in translesion DNA synthesis (PubMed:20164194). Translesion DNA synthesis releases the replication blockade of replicative polymerases, stalled in presence of DNA lesions (PubMed:20164194). Component of the shieldin complex, which plays an important role in repair of DNA double-stranded breaks (DSBs) (PubMed:29656893). During G1 and S phase of the cell cycle, the complex functions downstream of TP53BP1 to promote non-homologous end joining (NHEJ) and suppress DNA end resection (PubMed:29656893). Mediates various NHEJ-dependent processes including immunoglobulin class-switch recombination, and fusion of unprotected telomeres (PubMed:29656893). May also regulate another aspect of cellular response to DNA damage through regulation of the JNK-mediated phosphorylation and activation of the transcriptional activator ELK1 (PubMed:17296730). Inhibits the FZR1- and probably CDC20-mediated activation of the anaphase promoting complex APC</p>

thereby regulating progression through the cell cycle (PubMed:[11459825](#), PubMed:[17719540](#)). Regulates TCF7L2-mediated gene transcription and may play a role in epithelial-mesenchymal transdifferentiation (PubMed:[19443654](#)).

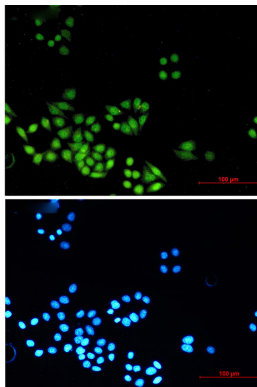
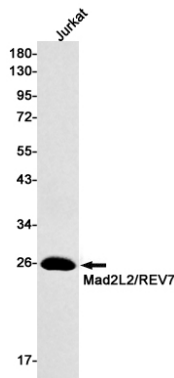
Cellular Location

Nucleus. Cytoplasm, cytoskeleton, spindle. Cytoplasm. Chromosome.
Note=Recruited to sites of chromosomal double-stranded breaks during G1 and S phase of the cell cycle

Tissue Location

Ubiquitously expressed.

Images



Please note: All products are 'FOR RESEARCH USE ONLY. NOT FOR USE IN DIAGNOSTIC OR THERAPEUTIC PROCEDURES'.