

ILK Rabbit mAb

Catalog # AP75626

Product Information

Application	WB, IHC-P, IP
Primary Accession	Q13418
Reactivity	Rat, Human, Mouse
Host	Rabbit
Clonality	Monoclonal Antibody
Isotype	IgG
Conjugate	Unconjugated
Purification	Affinity Purified
Calculated MW	51419

Additional Information

Gene ID	3611
Other Names	ILK
Dilution	WB~~1:500-1:1000 IHC-P~~N/A IP~~1:20
Format	Liquid in 50mM Tris-Glycine(pH 7.4), 0.15M NaCl, 40%Glycerol, 0.01% sodium azide and 0.05% BSA.
Storage	Store at 4°C short term. Aliquot and store at -20°C long term. Avoid freeze/thaw cycles.

Protein Information

Name	ILK (HGNC:6040)
Function	Scaffold protein which mediates protein-protein interactions during a range of cellular events including focal adhesion assembly, cell adhesion and cell migration (PubMed: 17420447 , PubMed: 20005845 , PubMed: 30367047 , PubMed: 32528174). Regulates integrin-mediated signal transduction by contributing to inside-out integrin activation (By similarity). Recruits PARVA and LIMS1/PITCH to form the heterotrimeric IPP (ILK-PINCH-PARVIN) complex which binds to F-actin via the C- terminal tail of LIMS1 and the N-terminal region of PARVA, promoting F- actin filament bundling, a process required to generate force for actin cytoskeleton reorganization and subsequent dynamic cell adhesion events such as cell spreading and migration (PubMed: 30367047). Binding to PARVA promotes effective assembly of ILK into focal adhesions while PARVA-bound ILK can simultaneously engage integrin-beta cytoplasmic tails to mediate cell adhesion (PubMed: 20005845). Plays a role with PARVG in promoting the cell adhesion and spreading of leukocytes (PubMed: 16517730). Acts as an upstream effector of both

AKT1/PKB and GSK3 (PubMed:[9736715](#)). Mediates trafficking of caveolae to the cell surface in an ITGB1-dependent manner by promoting the recruitment of IQGAP1 to the cell cortex which cooperates with its effector DIAPH1 to locally stabilize microtubules and allow stable insertion of caveolae into the plasma membrane (By similarity). Required for the maintenance of mitotic spindle integrity by promoting phosphorylation of TACC3 by AURKA (PubMed:[18283114](#)). Associates with chromatin and may act as a negative regulator of transcription when located in the nucleus (PubMed:[17420447](#)).

Cellular Location

Cell junction, focal adhesion. Cell membrane; Peripheral membrane protein; Cytoplasmic side. Cell projection, lamellipodium {ECO:0000250|UniProtKB:O55222}. Cytoplasm, myofibril, sarcomere. Cytoplasm Nucleus. Cytoplasm, cytoskeleton, microtubule organizing center, centrosome. Cytoplasm, cell cortex {ECO:0000250|UniProtKB:O55222}

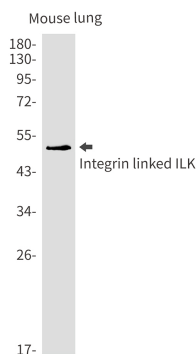
Tissue Location

Highly expressed in heart followed by skeletal muscle, pancreas and kidney. Weakly expressed in placenta, lung and liver

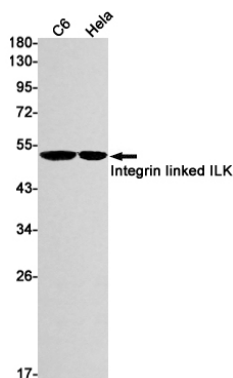
Background

Integrin-linked kinases (ILKs) couple integrins and growth factors to downstream pathways involved in cell survival, cell cycle control, cell-cell adhesion and cell motility. ILK functions as a scaffold bridging the extracellular matrix (ECM) and growth factor receptors to the actin cytoskeleton through interactions with integrin, PINCH (which links ILK to the RTKs via Nck2), CH-ILKBP and affixin.

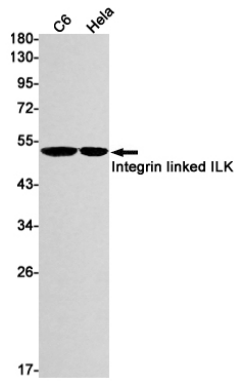
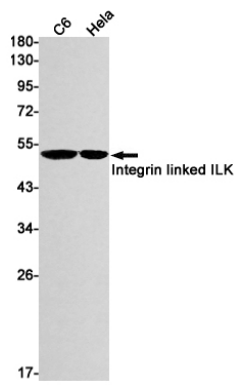
Images



Western blot analysis of Integrin linked ILK in mouse lung lysates using Integrin Linked ILK antibody.



Western blot analysis of Integrin linked ILK in C6, HeLa lysates using Integrin linked ILK antibody.



Please note: All products are 'FOR RESEARCH USE ONLY. NOT FOR USE IN DIAGNOSTIC OR THERAPEUTIC PROCEDURES'.