

IL-11RA Rabbit mAb

Catalog # AP75610

Product Information

Application	WB, IHC-P, FC
Primary Accession	Q14626
Reactivity	Human, Mouse
Host	Rabbit
Clonality	Monoclonal Antibody
Isotype	IgG
Conjugate	Unconjugated
Purification	Affinity Purified
Calculated MW	45222

Additional Information

Gene ID	3590
Other Names	IL11RA
Dilution	WB~~1:1000-1:5000 IHC-P~~N/A FC~~1:50-1:100
Format	Liquid in 50mM Tris-Glycine(pH 7.4), 0.15M NaCl, 40%Glycerol, 0.01% sodium azide and 0.05% BSA.
Storage	Store at 4°C short term. Aliquot and store at -20°C long term. Avoid freeze/thaw cycles.

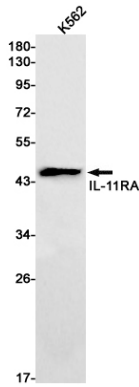
Protein Information

Name	IL11RA (HGNC:5967)
Function	Receptor for interleukin-11 (IL11). The receptor systems for IL6, LIF, OSM, CNTF, IL11 and CT1 can utilize IL6ST for initiating signal transmission. The IL11/IL11RA/IL6ST complex may be involved in the control of proliferation and/or differentiation of skeletogenic progenitor or other mesenchymal cells (Probable). Essential for the normal development of craniofacial bones and teeth. Restricts suture fusion and tooth number.
Cellular Location	[Interleukin-11 receptor subunit alpha]: Membrane; Single-pass type I membrane protein [Isoform HCR2]: Secreted
Tissue Location	Expressed in a number of cell lines, including the myelogenous leukemia cell line K-562, the megakaryocytic leukemia cell line M-07e, the erythroleukemia cell line TF-1, and the osteosarcoma cell lines, MG-63 and SaOS-2 (PubMed:7670098). Also expressed in normal and malignant prostate epithelial cell lines. Expression levels are increased in prostate carcinoma.

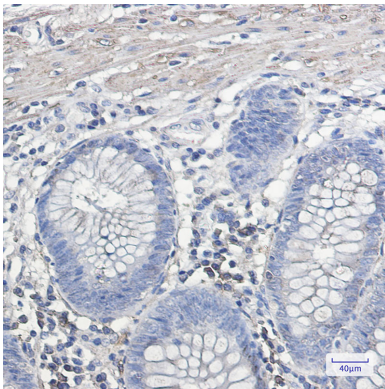
Background

Receptor for interleukin-11. The receptor systems for IL6, LIF, OSM, CNTF, IL11 and CT1 can utilize IL6ST for initiating signal transmission. The IL11/IL11RA/IL6ST complex may be involved in the control of proliferation and/or differentiation of skeletogenic progenitor or other mesenchymal cells. Essential for the normal development of craniofacial bones and teeth. Restricts suture fusion and tooth number.

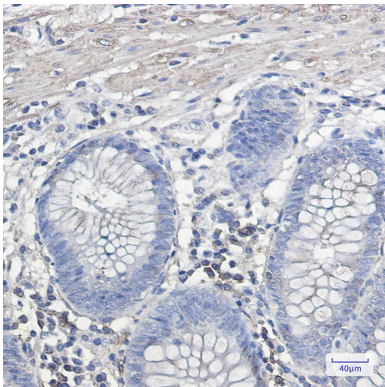
Images

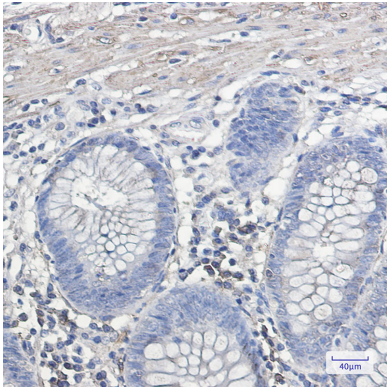


Western blot analysis of IL-11RA in K562 lysates using IL-11 Receptor alpha antibody.



Immunohistochemistry analysis of paraffin-embedded Human colon cancer using IL-11RA antibody. High-pressure and temperature Sodium Citrate pH 6.0 was used for antigen retrieval.





Please note: All products are 'FOR RESEARCH USE ONLY. NOT FOR USE IN DIAGNOSTIC OR THERAPEUTIC PROCEDURES'.