

# IFT88 Rabbit mAb

Catalog # AP75596

## Product Information

---

Application	WB
Primary Accession	<a href="#">Q13099</a>
Reactivity	Human, Mouse, Rat
Host	Rabbit
Clonality	Monoclonal Antibody
Calculated MW	93192

## Additional Information

---

Gene ID	8100
Other Names	IFT88
Dilution	WB~~1/500-1/1000
Format	50mM Tris-Glycine(pH 7.4), 0.15M NaCl, 40%Glycerol, 0.01% sodium azide and 0.05% BSA.
Storage	Store at 4°C short term. Aliquot and store at -20°C long term. Avoid freeze/thaw cycles.

## Protein Information

---

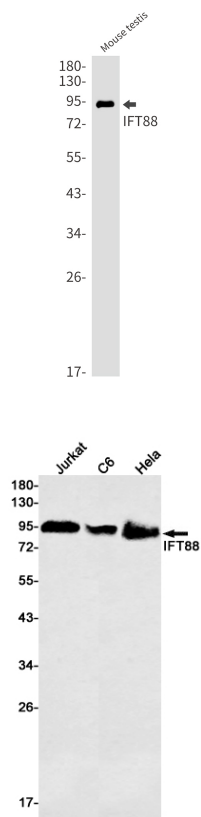
Name	IFT88
Synonyms	TG737, TTC10
Function	Positively regulates primary cilium biogenesis (PubMed: <a href="#">17604723</a> ). Also involved in autophagy since it is required for trafficking of ATG16L and the expansion of the autophagic compartment.
Cellular Location	Cytoplasm, cytoskeleton, microtubule organizing center, centrosome, centriole {ECO:0000250 UniProtKB:Q61371}. Cell projection, cilium. Cytoplasm, cytoskeleton, cilium basal body. Cytoplasm, cytoskeleton, microtubule organizing center, centrosome. Cytoplasm {ECO:0000250 UniProtKB:Q61371}. Cell projection, cilium, flagellum {ECO:0000250 UniProtKB:Q61371}. Cytoplasm, cytoskeleton {ECO:0000250 UniProtKB:Q61371}. Note=Colocalizes with ENTR1 and gamma- tubulin at the basal body of primary cilia (PubMed:27767179) Colocalizes with ENTR1 and pericentrin at the centrosome (PubMed:27767179). In sperm cells, localizes to the manchette, head- tail coupling apparatus and flagellum (By similarity) {ECO:0000250 UniProtKB:Q61371, ECO:0000269 PubMed:27767179}

**Tissue Location**

Expressed in the heart, brain, liver, lung, kidney, skeletal muscle and pancreas.

**Images**

---



Please note: All products are 'FOR RESEARCH USE ONLY. NOT FOR USE IN DIAGNOSTIC OR THERAPEUTIC PROCEDURES'.