

HP1 gamma Rabbit mAb

Catalog # AP75571

Product Information

Application	WB, IHC-P
Primary Accession	Q13185
Reactivity	Rat, Human, Mouse
Host	Rabbit
Clonality	Monoclonal Antibody
Isotype	IgG
Conjugate	Unconjugated
Purification	Affinity Purified
Calculated MW	20811

Additional Information

Gene ID	11335
Other Names	CBX3
Dilution	WB~~1:1000-1:5000 IHC-P~~N/A
Format	Liquid in 50mM Tris-Glycine(pH 7.4), 0.15M NaCl, 40%Glycerol, 0.01% sodium azide and 0.05% BSA.
Storage	Store at 4°C short term. Aliquot and store at -20°C long term. Avoid freeze/thaw cycles.

Protein Information

Name	CBX3
Function	Component of heterochromatin, which recognizes and binds histone H3 tails methylated at 'Lys-9', leading to epigenetic repression (PubMed: 11242053). Also recognizes and binds histone H1.4 methylated at 'Lys-26' (H1.4K26me) (PubMed: 16127177). Excluded from chromatin when histone H1.4 is Simultaneously methylated at Lys-26 (H1.4K26me) and phosphorylated at Ser-27 (H1.4S27Ph) (PubMed: 16127177). Involved in the formation of functional kinetochore through interaction with MIS12 complex proteins (PubMed: 15502821). Contributes to the conversion of local chromatin to a heterochromatin-like repressive state through H3 'Lys-9' trimethylation, mediates the recruitment of the methyltransferases SUV39H1 and/or SUV39H2 by the PER complex to the E-box elements of the circadian target genes such as PER2 itself or PER1 (By similarity). Mediates the recruitment of NIPBL to sites of DNA damage at double-strand breaks (DSBs) (PubMed: 28167679).

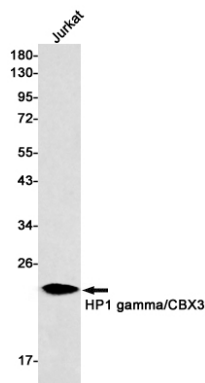
Cellular Location

Nucleus. Note=Associates with euchromatin and is largely excluded from constitutive heterochromatin. May be associated with microtubules and mitotic poles during mitosis (Potential).

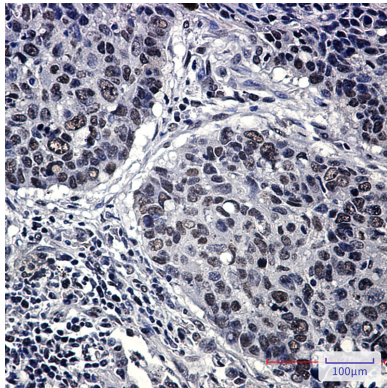
Background

Recognizes and binds histone H3 tails methylated at 'Lys-9', leading to epigenetic repression. May contribute to the association of the heterochromatin with the inner nuclear membrane through its interaction with lamin B receptor (LBR). Involved in the formation of functional kinetochore through interaction with MIS12 complex proteins.

Images



Western blot analysis of HP1 gamma/CBX3 in Jurkat lysates using HP1 gamma antibody.



Immunohistochemistry analysis of paraffin-embedded Human lung cancer using HP1 gamma antibody. High-pressure and temperature Sodium Citrate pH 6.0 was used for antigen retrieval.

Please note: All products are 'FOR RESEARCH USE ONLY. NOT FOR USE IN DIAGNOSTIC OR THERAPEUTIC PROCEDURES'.