

HOPX Rabbit mAb

Catalog # AP75567

Product Information

Application	WB, IP
Primary Accession	Q8R1H0
Reactivity	Human
Host	Rabbit
Clonality	Monoclonal Antibody
Calculated MW	8282

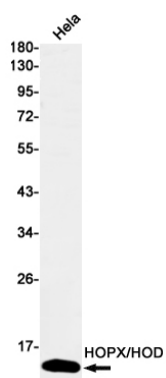
Additional Information

Gene ID	74318
Other Names	Hopx
Dilution	WB~~1/500-1/1000 IP~~N/A
Format	50mM Tris-Glycine(pH 7.4), 0.15M NaCl, 40%Glycerol, 0.01% sodium azide and 0.05% BSA.
Storage	Store at 4°C short term. Aliquot and store at -20°C long term. Avoid freeze/thaw cycles.

Protein Information

Name	Hopx
Synonyms	Hod, Hop, Ob1
Function	Atypical homeodomain protein which does not bind DNA and is required to modulate cardiac growth and development. Acts via its interaction with SRF, thereby modulating the expression of SRF- dependent cardiac-specific genes and cardiac development. Prevents SRF- dependent transcription either by inhibiting SRF binding to DNA or by recruiting histone deacetylase (HDAC) proteins that prevent transcription by SRF. Overexpression causes cardiac hypertrophy (PubMed: 12297045 , PubMed: 12297046). Acts as a co-chaperone for HSPA1A and HSPA1B chaperone proteins and assists in chaperone-mediated protein refolding (By similarity).
Cellular Location	Nucleus. Cytoplasm. Note=According to PubMed:14516659 it is cytoplasmic.
Tissue Location	Expressed in the embryonic and adult heart and in the adult brain, liver, lung, skeletal muscle, intestine and spleen Throughout embryonic and postnatal development, it is expressed in the myocardium.

Images



Please note: All products are 'FOR RESEARCH USE ONLY. NOT FOR USE IN DIAGNOSTIC OR THERAPEUTIC PROCEDURES'.