

# hnRNP G Rabbit mAb

Catalog # AP75559

## Product Information

---

<b>Application</b>	WB, IHC-P, IHC-F, ICC
<b>Primary Accession</b>	<a href="#">P38159</a>
<b>Reactivity</b>	Human
<b>Host</b>	Rabbit
<b>Clonality</b>	Monoclonal Antibody
<b>Calculated MW</b>	42332

## Additional Information

---

<b>Gene ID</b>	27316
<b>Other Names</b>	RBMX
<b>Dilution</b>	WB~~1/500-1/1000 IHC-P~~N/A IHC-F~~N/A ICC~~N/A
<b>Format</b>	50mM Tris-Glycine(pH 7.4), 0.15M NaCl, 40%Glycerol, 0.01% sodium azide and 0.05% BSA.
<b>Storage</b>	Store at 4°C short term. Aliquot and store at -20°C long term. Avoid freeze/thaw cycles.

## Protein Information

---

<b>Name</b>	RBMX
<b>Synonyms</b>	HNRPG, RBMXP1
<b>Function</b>	<p>RNA-binding protein that plays several role in the regulation of pre- and post-transcriptional processes. Implicated in tissue- specific regulation of gene transcription and alternative splicing of several pre-mRNAs. Binds to and stimulates transcription from the tumor suppressor TXNIP gene promoter; may thus be involved in tumor suppression. When associated with SAFB, binds to and stimulates transcription from the SREBF1 promoter. Associates with nascent mRNAs transcribed by RNA polymerase II. Component of the supraspliceosome complex that regulates pre-mRNA alternative splice site selection. Can either activate or suppress exon inclusion; acts additively with TRA2B to promote exon 7 inclusion of the survival motor neuron SMN2. Represses the splicing of MAPT/Tau exon 10. Binds preferentially to single-stranded 5'-CC[A/C]-rich RNA sequence motifs localized in a single-stranded conformation; probably binds RNA as a homodimer. Binds non-specifically to pre-mRNAs. Also plays a role in the cytoplasmic TNFR1 trafficking pathways; promotes both the IL-1-beta-mediated inducible proteolytic cleavage of TNFR1 ectodomains and the release of TNFR1</p>

exosome-like vesicles to the extracellular compartment.

### Cellular Location

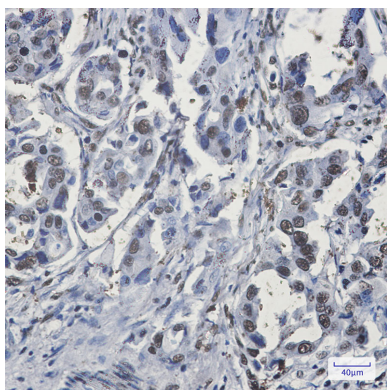
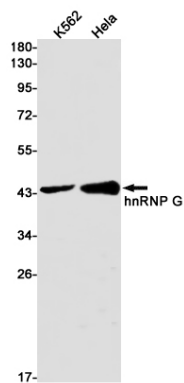
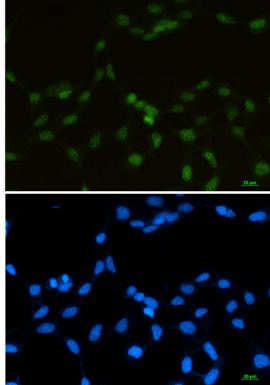
Nucleus Note=Component of ribonucleosomes. Localizes in numerous small granules in the nucleus

### Tissue Location

Expressed strongly in oral keratinocytes, but only weakly detected in oral squamous cell carcinomas (at protein level)

## Images

---



Please note: All products are 'FOR RESEARCH USE ONLY. NOT FOR USE IN DIAGNOSTIC OR THERAPEUTIC PROCEDURES'.