

# HLTF Rabbit mAb

Catalog # AP75552

## Product Information

---

<b>Application</b>	WB, ICC
<b>Primary Accession</b>	<a href="#">Q14527</a>
<b>Host</b>	Rabbit
<b>Clonality</b>	Monoclonal Antibody
<b>Calculated MW</b>	113929

## Additional Information

---

<b>Gene ID</b>	6596
<b>Other Names</b>	HLTF
<b>Dilution</b>	WB~~1/500-1/1000 ICC~~N/A
<b>Format</b>	50mM Tris-Glycine(pH 7.4), 0.15M NaCl, 40%Glycerol, 0.01% sodium azide and 0.05% BSA.
<b>Storage</b>	Store at 4°C short term. Aliquot and store at -20°C long term. Avoid freeze/thaw cycles.

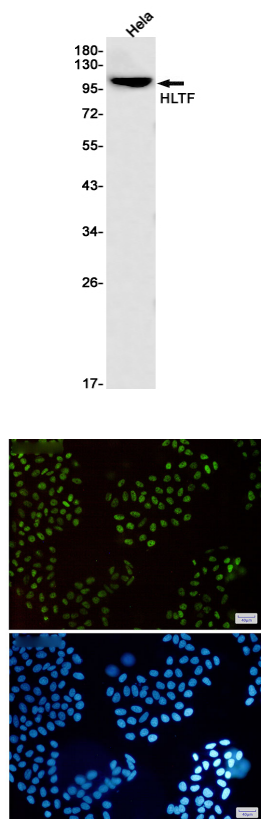
## Protein Information

---

<b>Name</b>	HLTF
<b>Synonyms</b>	HIP116A, RNF80, SMARCA3, SNF2L3, ZBU1
<b>Function</b>	Has both helicase and E3 ubiquitin ligase activities. Possesses intrinsic ATP-dependent nucleosome-remodeling activity; This activity may be required for transcriptional activation or repression of specific target promoters (By similarity). These may include the SERPINE1 and HIV-1 promoters and the SV40 enhancer, to which this protein can bind directly. Plays a role in error-free postreplication repair (PRR) of damaged DNA and maintains genomic stability through acting as a ubiquitin ligase for 'Lys-63'-linked polyubiquitination of chromatin-bound PCNA.
<b>Cellular Location</b>	Cytoplasm. Nucleus. Nucleus, nucleolus Nucleus, nucleoplasm. Note=Nuclear localization is stimulated by progesterone.
<b>Tissue Location</b>	Expressed in brain, heart, kidney, liver, lung, pancreas, placenta and skeletal muscle.

## Images

---



Please note: All products are 'FOR RESEARCH USE ONLY. NOT FOR USE IN DIAGNOSTIC OR THERAPEUTIC PROCEDURES'.