

Growth Hormone Receptor Rabbit mAb

Catalog # AP75518

Product Information

Application	WB, IP
Primary Accession	P10912
Reactivity	Rat
Host	Rabbit
Clonality	Monoclonal Antibody
Calculated MW	71500

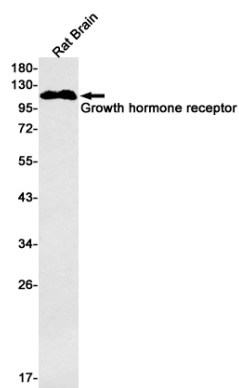
Additional Information

Gene ID	2690
Other Names	GHR
Dilution	WB~~1/500-1/1000 IP~~N/A
Format	50mM Tris-Glycine(pH 7.4), 0.15M NaCl, 40%Glycerol, 0.01% sodium azide and 0.05% BSA.
Storage	Store at 4°C short term. Aliquot and store at -20°C long term. Avoid freeze/thaw cycles.

Protein Information

Name	GHR
Function	Receptor for pituitary gland growth hormone (GH1) involved in regulating postnatal body growth (PubMed: 1549776 , PubMed: 2825030 , PubMed: 8943276). On ligand binding, couples to the JAK2/STAT5 pathway (PubMed: 1549776 , PubMed: 15690087 , PubMed: 2825030 , PubMed: 8943276).
Cellular Location	Cell membrane; Single-pass type I membrane protein. Note=On growth hormone binding, GHR is ubiquitinated, internalized, down-regulated and transported into a degradative or non-degradative pathway {ECO:0000250 UniProtKB:P19941} [Growth hormone-binding protein]: Secreted. Note=Complexed to a substantial fraction of circulating GH.
Tissue Location	Expressed in various tissues with high expression in liver and skeletal muscle. [Isoform 4]: Predominantly expressed in kidney, bladder, adrenal gland and brain stem (PubMed:1569971). Highly expressed in placental villi (PubMed:1569971, PubMed:8360189)

Images



Please note: All products are 'FOR RESEARCH USE ONLY. NOT FOR USE IN DIAGNOSTIC OR THERAPEUTIC PROCEDURES'.